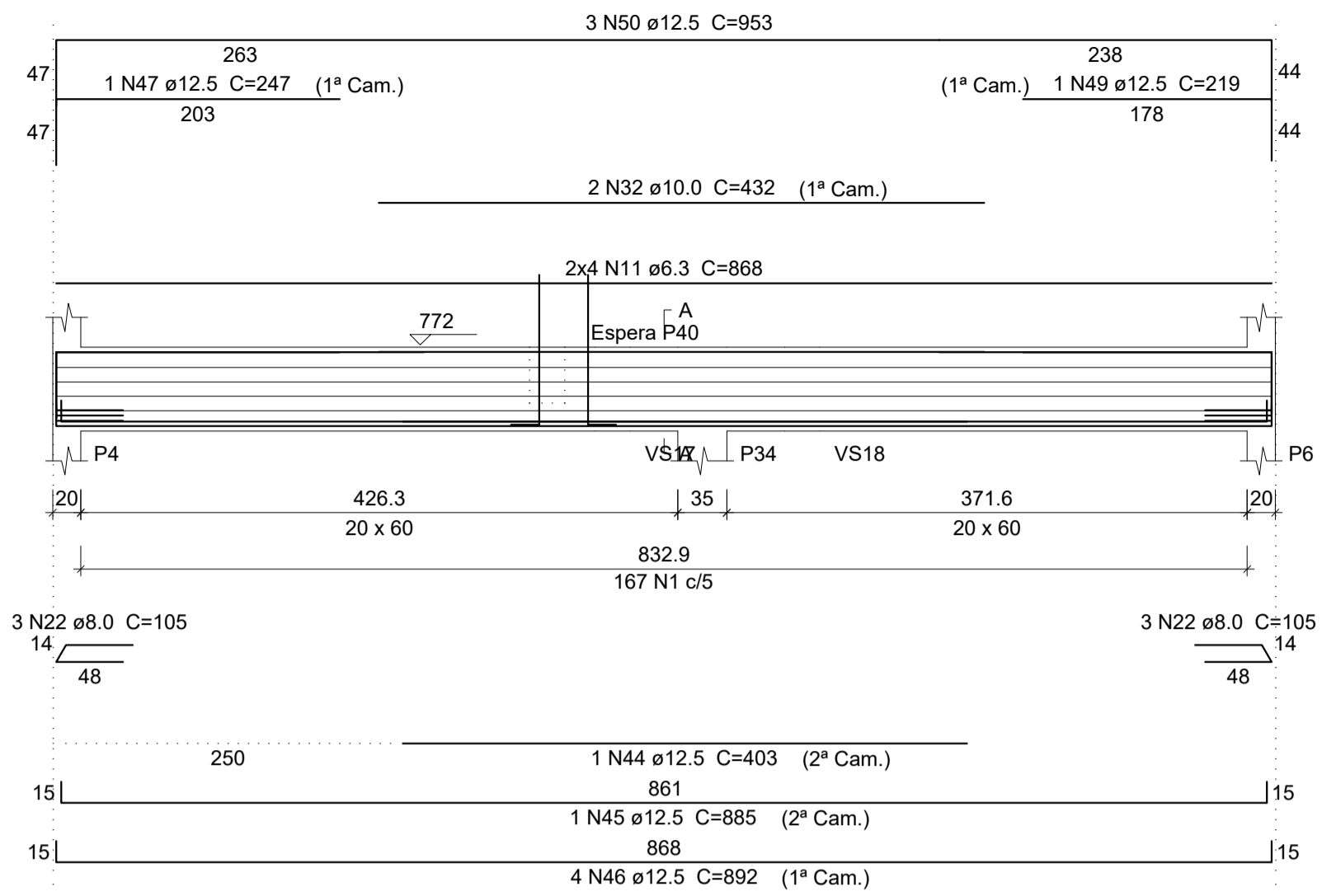
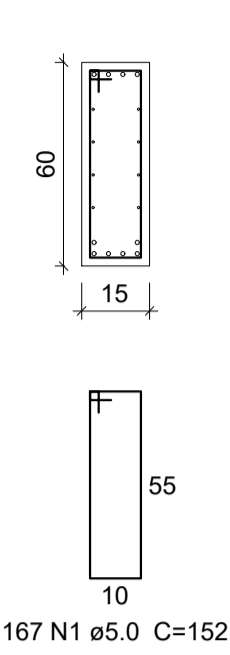


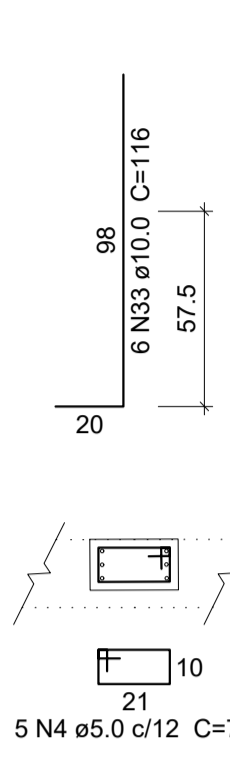
**VS1**  
ESC 1:50



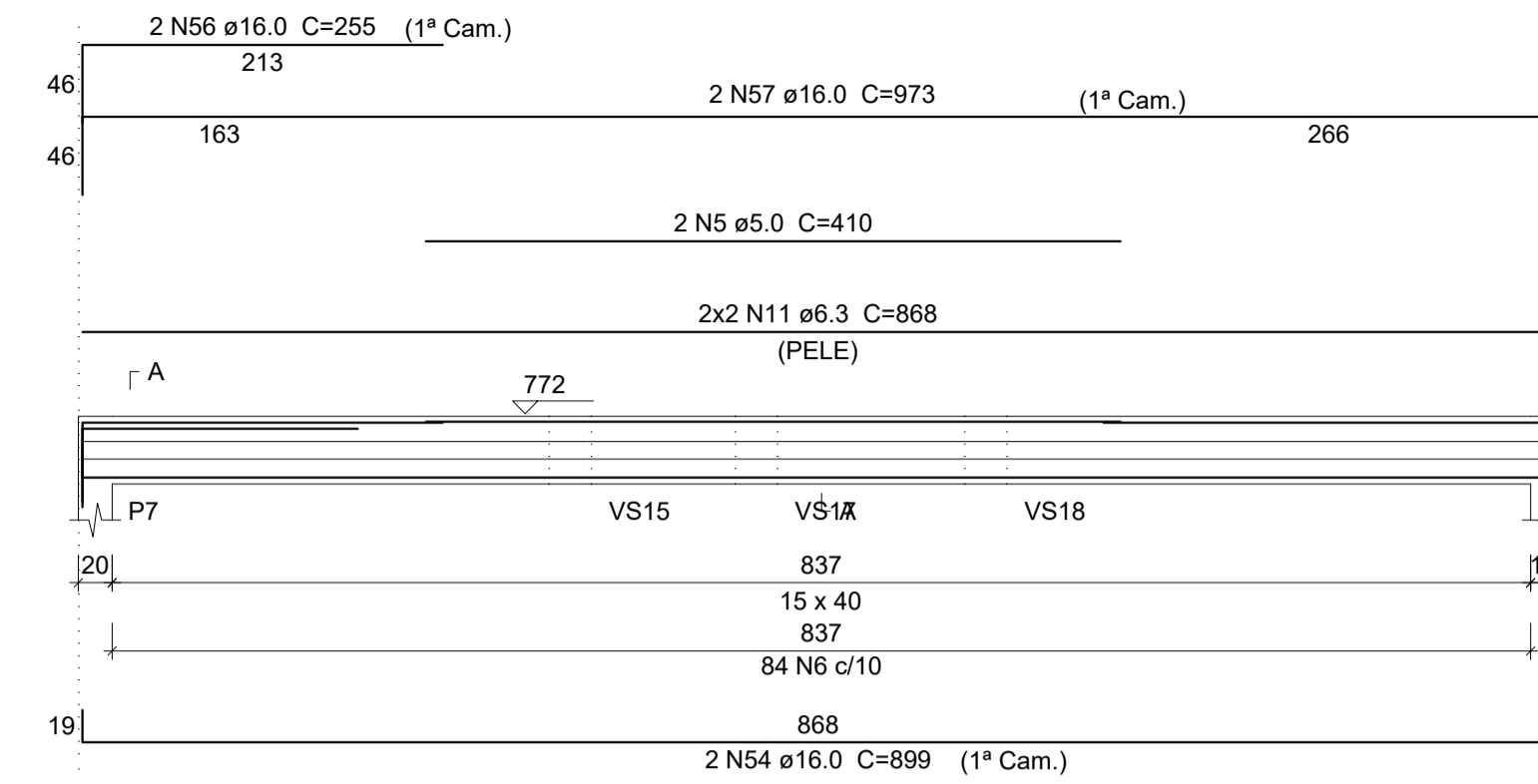
**SEÇÃO A-A**  
ESC 1:25



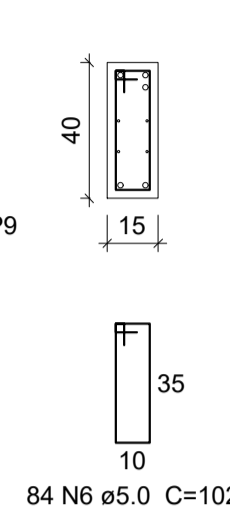
**ESPERA P40**  
ESC 1:25



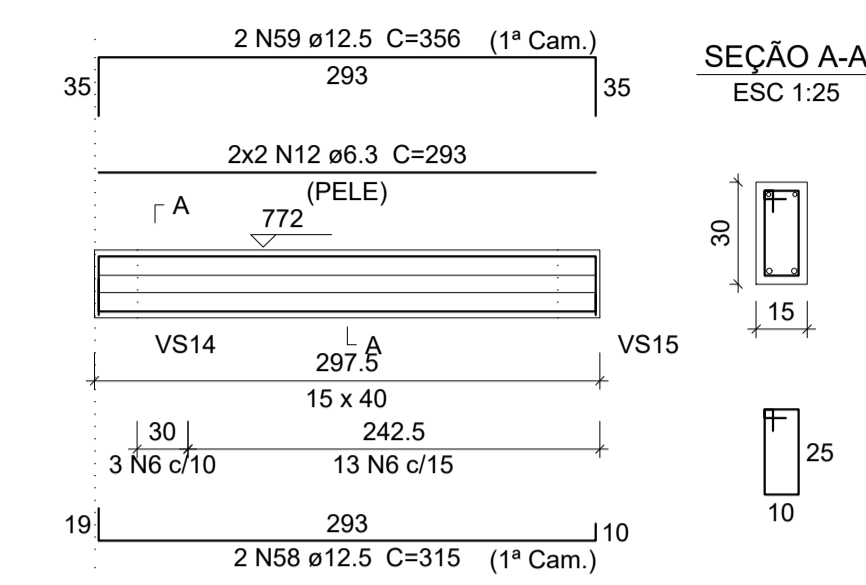
**VS2**  
ESC 1:50



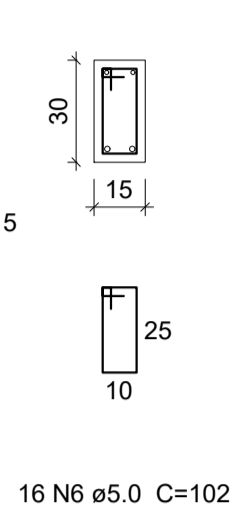
**SEÇÃO A-A**  
ESC 1:25



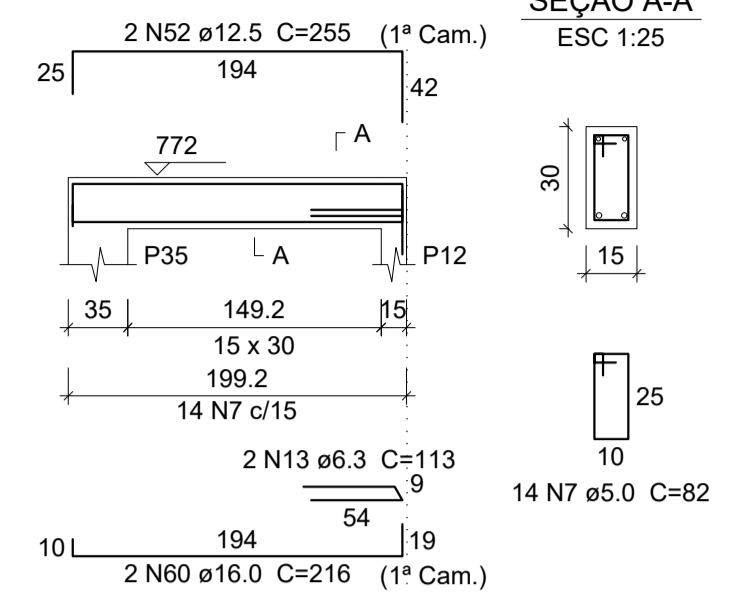
**VS3=VS5B**  
ESC 1:50



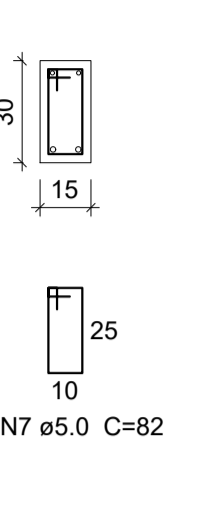
**SEÇÃO A-A**  
ESC 1:25



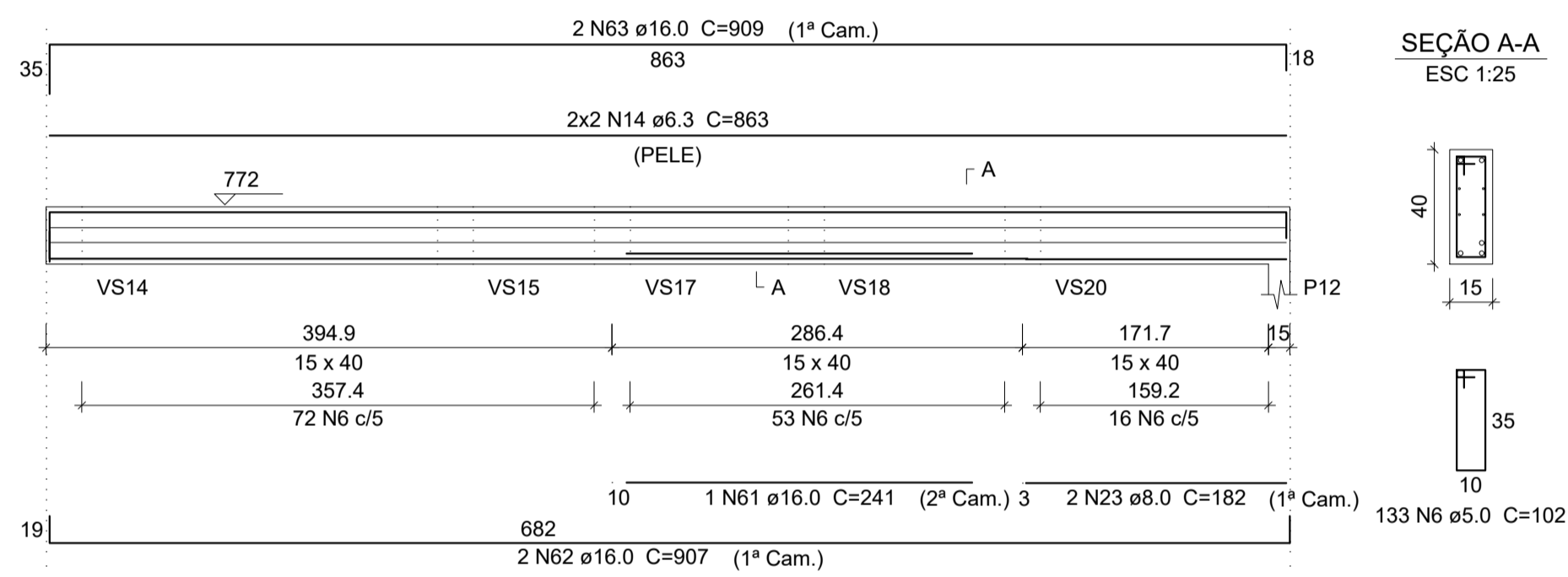
**VS4**  
ESC 1:50



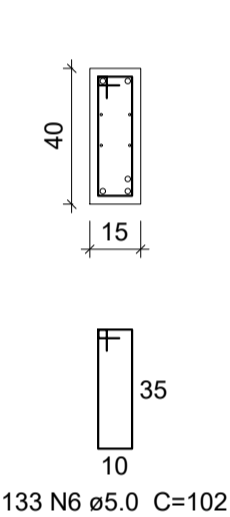
**SEÇÃO A-A**  
ESC 1:25



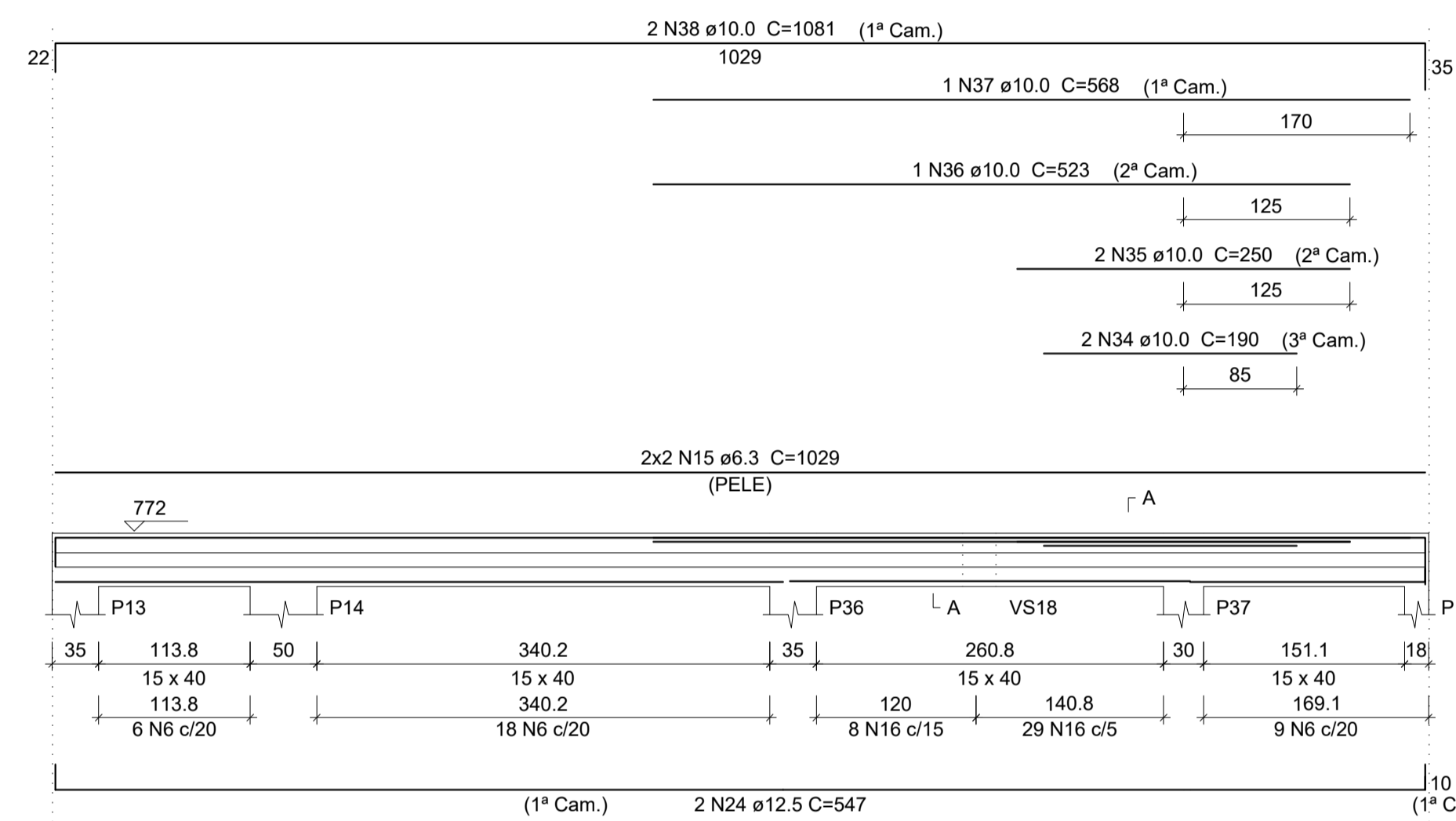
**VS5**  
ESC 1:50



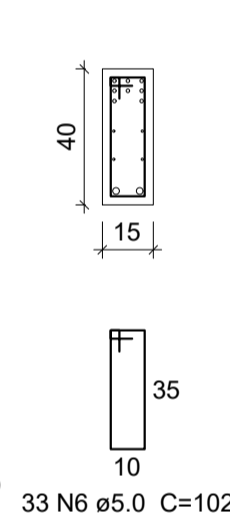
**SEÇÃO A-A**  
ESC 1:25



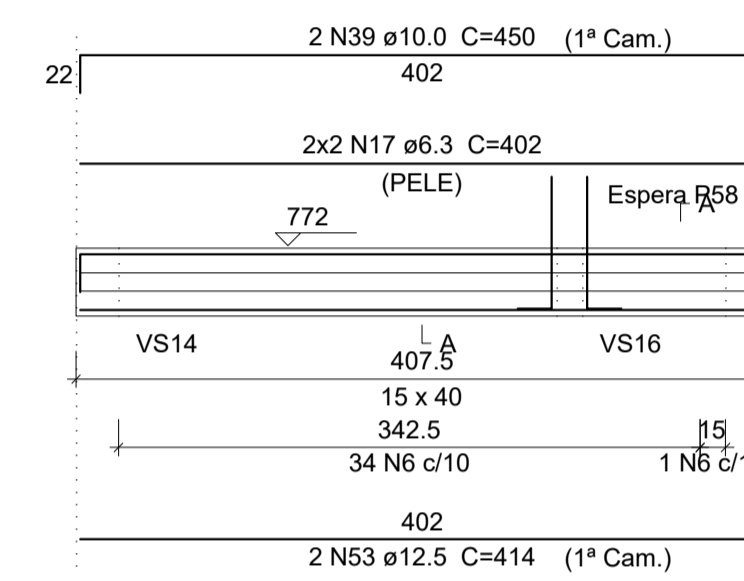
**VS6**  
ESC 1:50



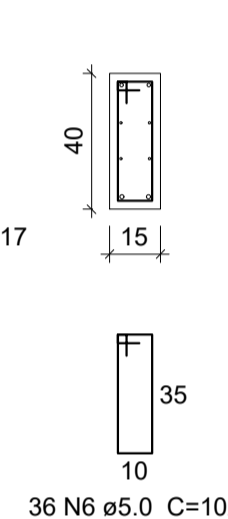
**SEÇÃO A-A**  
ESC 1:25



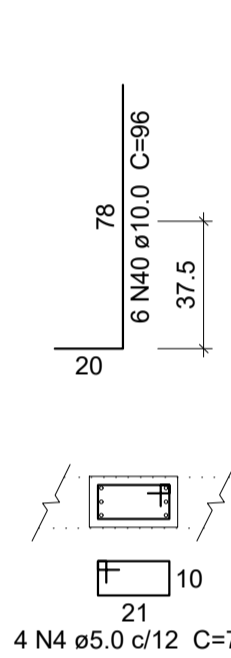
**VS7**  
ESC 1:50



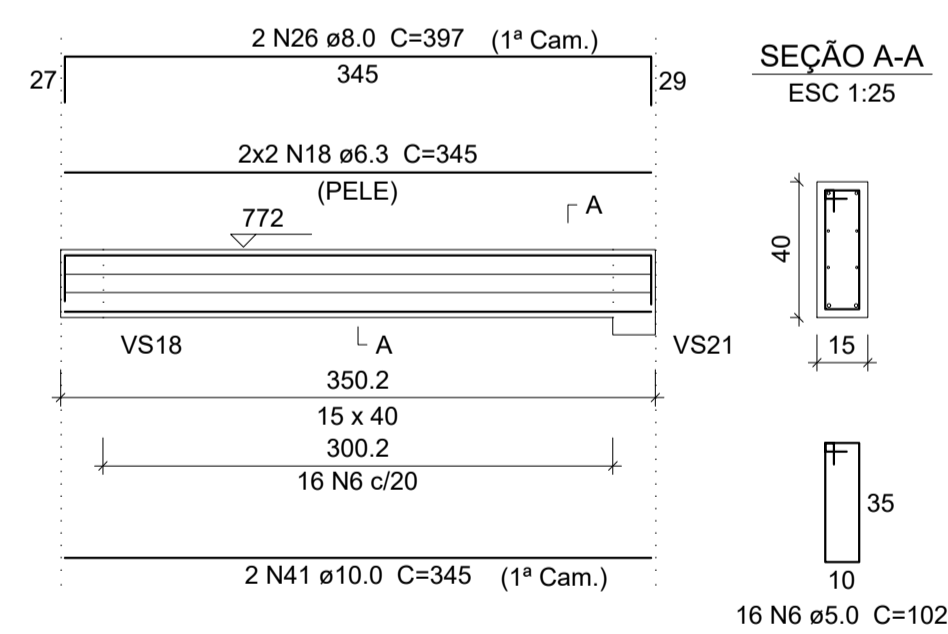
**SEÇÃO A-A**  
ESC 1:25



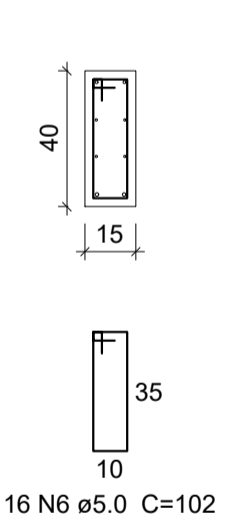
**ESPERA P58**  
ESC 1:25



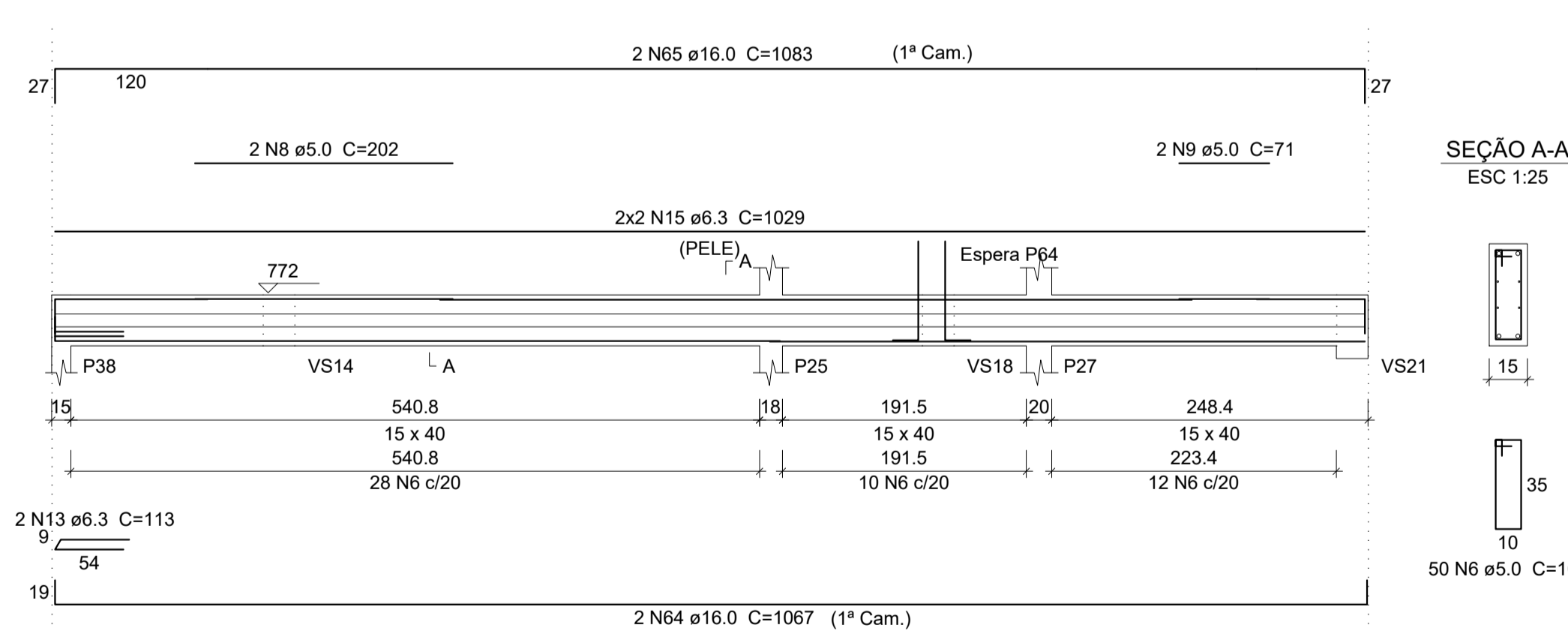
**VS8**  
ESC 1:50



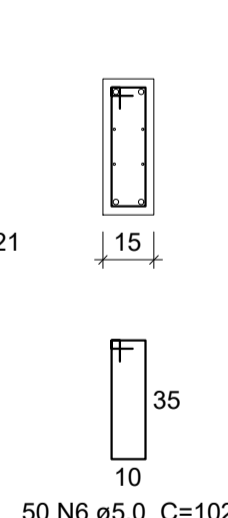
**SEÇÃO A-A**  
ESC 1:25



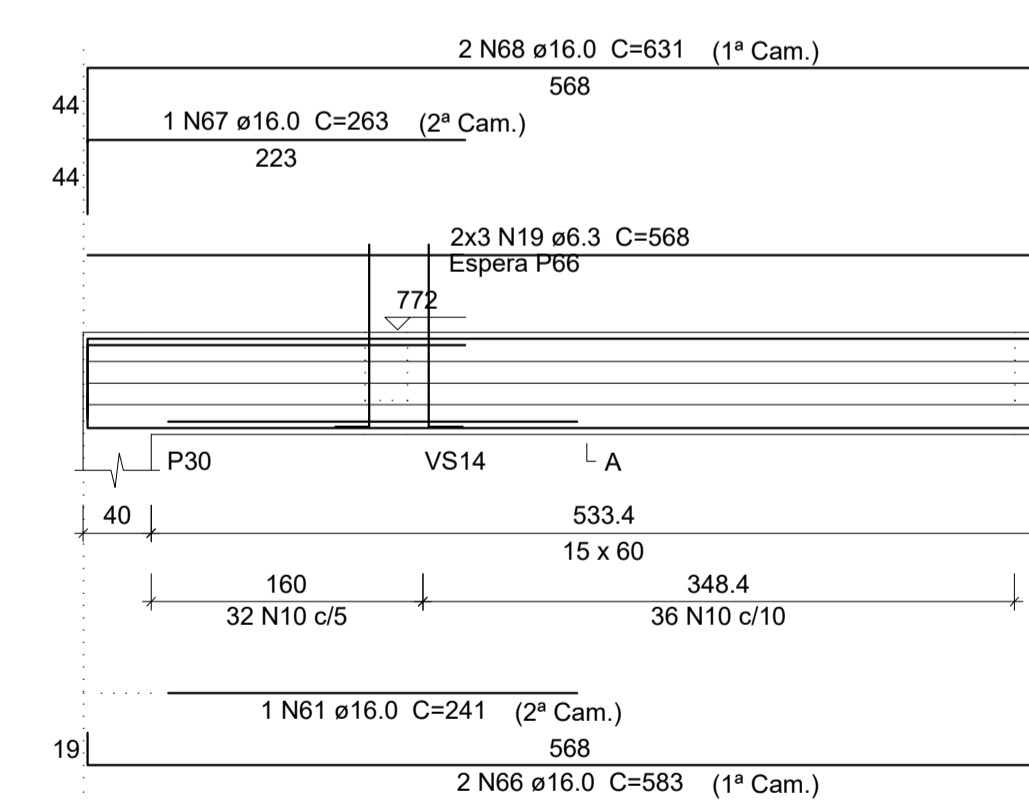
**VS10**  
ESC 1:50



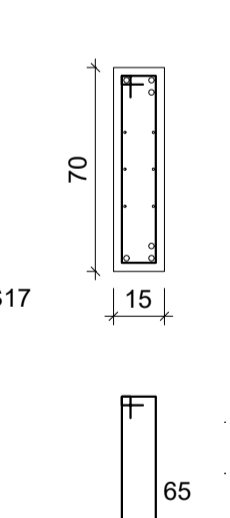
**SEÇÃO A-A**  
ESC 1:25



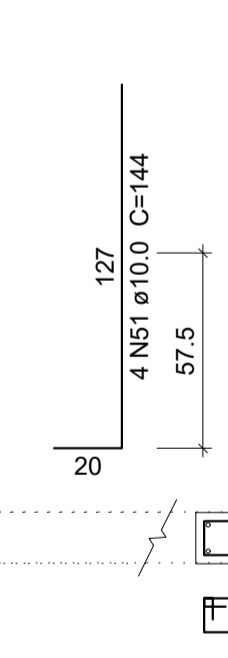
**VS11**  
ESC 1:50



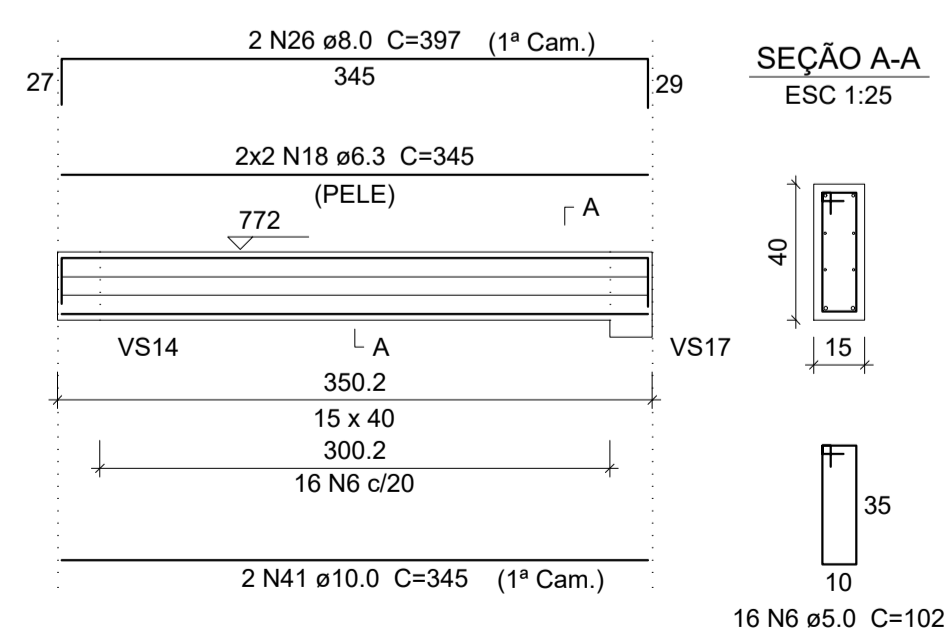
**SEÇÃO A-A**  
ESC 1:25



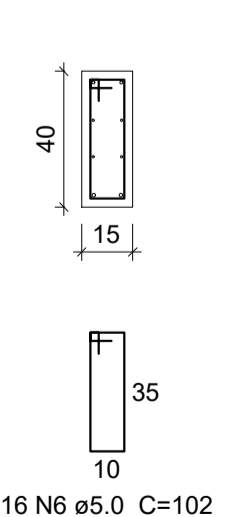
**ESPERA P66**  
ESC 1:25



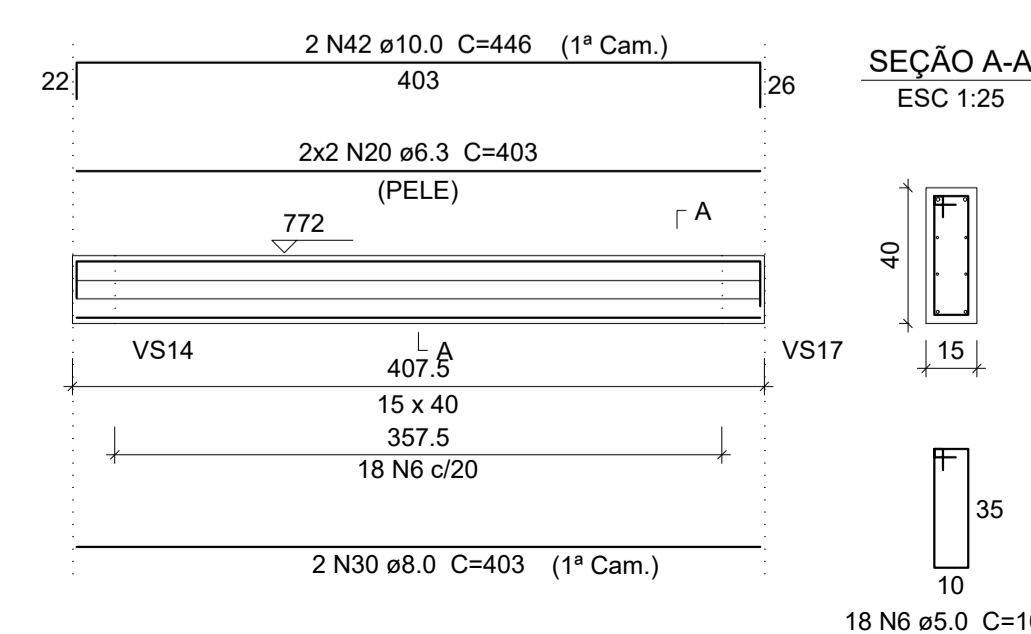
**VS9**  
ESC 1:50



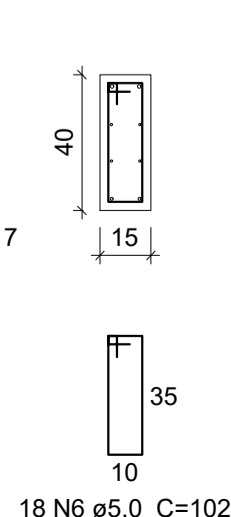
**SEÇÃO A-A**  
ESC 1:25



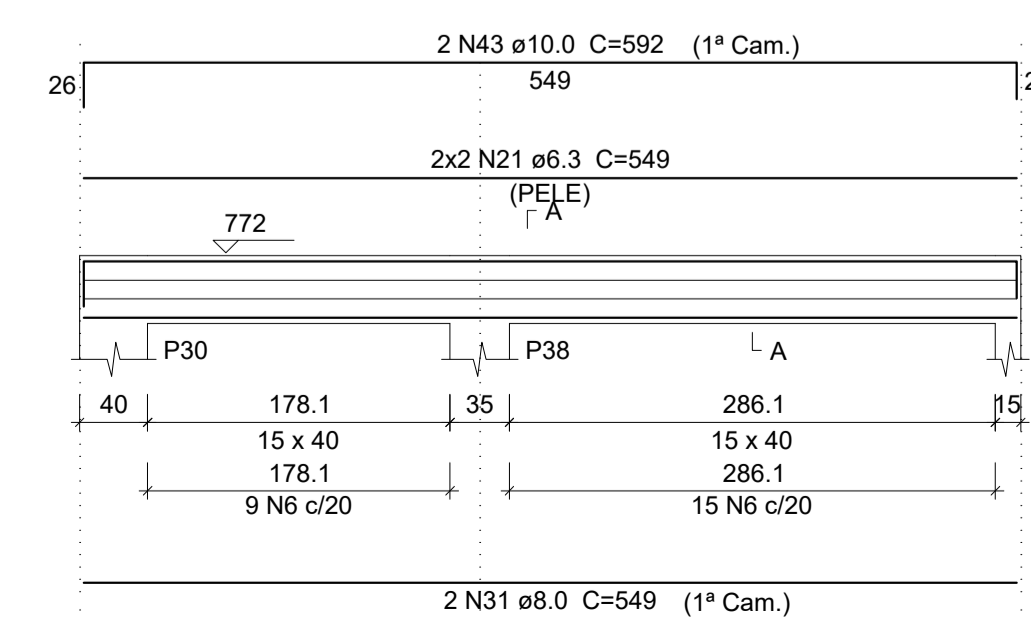
**VS12**  
ESC 1:50



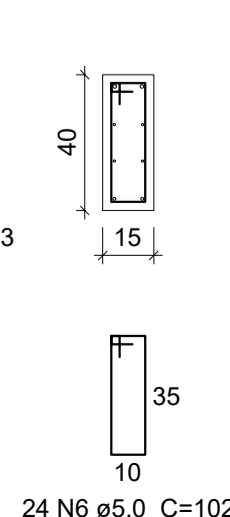
**SEÇÃO A-A**  
ESC 1:25



**VS13**  
ESC 1:50



**SEÇÃO A-A**  
ESC 1:25



**Resumo do aço**

AÇO	DIAM	C.TOTAL (m)	PESO + 10 % (kg)
CA50	6.3	377.1	101.5
	8.0	66	28.6
	10.0	112.5	76.3
	12.5	115.9	122.7
	16.0	142.8	237.2
CA60	5.0	727.8	123.4
<b>PESO TOTAL</b>			
CA50		582.7	
CA60		123.4	

Vol. de concreto total (C-25) = 5.15 m³  
Área de forma total = 76.8 m²

**PROJETO ESTRUTURAL**

OBRA: **RESIDÊNCIA EM ALVENARIA**

CLIENTE: **SILAS AUGUSTO BULGARELLI DE FREITAS**

ENDEREÇO: **RUA ARACÊ, nº 24 FAZENDA SÃO JOSÉ - SANTANA DE PARNAÍBA - SP**

RESPONSÁVEL TÉCNICO: **GUSTAVO H. S. BELANSON** CREA-PR 193709/D

CONTEUDO: **VIGAS PAV. SUPERIOR - 01**

ESCALA: **1:50** DATA: **31/01/2022** PRANCHA: **01/01**

UNIDADE: **cm** ARQUIVO: **DWG** REVISÃO: **00**

**GB ENGENHARIA**  
Rua Ona 253 - Jardim Aeroporto  
Aracaju - PR - Fone: (41) 35603-1699  
www.gbengenharia.com.br