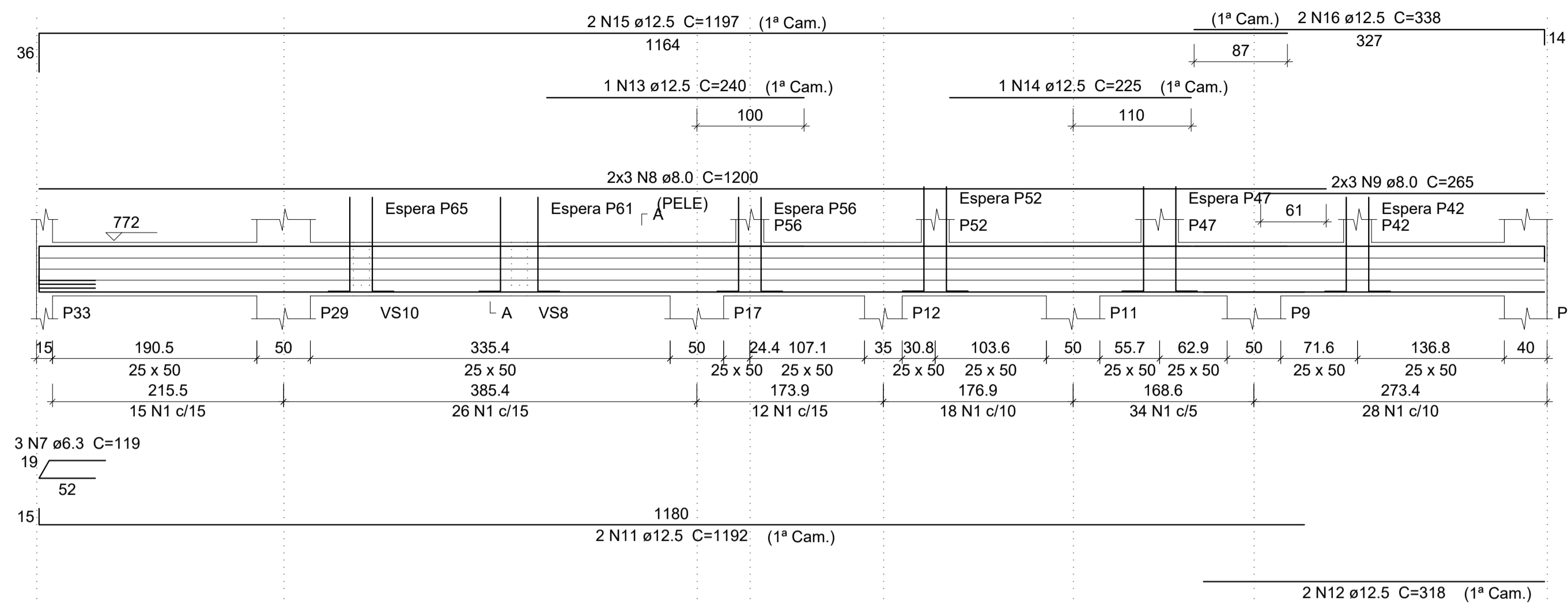
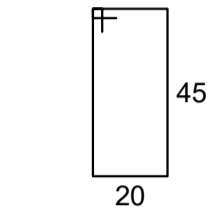
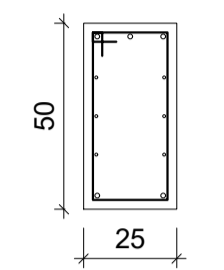


VS21  
ESC 1:50

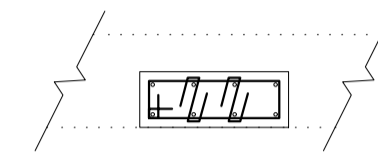
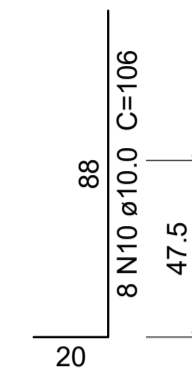


SEÇÃO A-A  
ESC 1:25



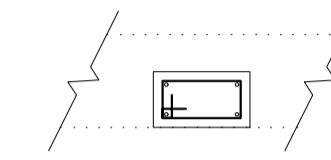
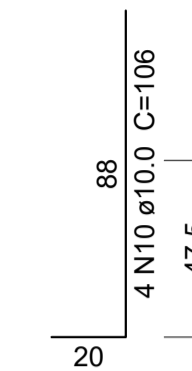
133 N1 ø5.0 C=142

ESPERA P61  
ESC 1:25



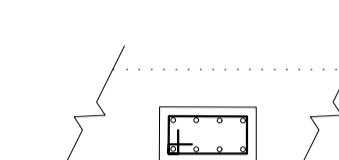
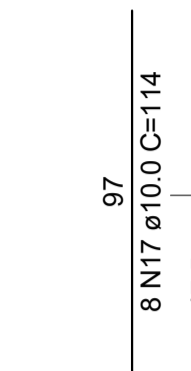
8 N2 ø5.0 C=25

ESPERA P56  
ESC 1:25



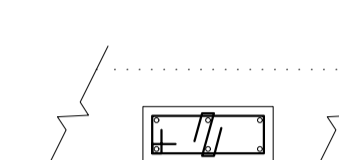
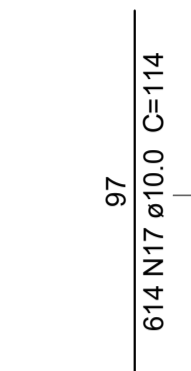
4 N4 ø5.0 c/12 C=74

ESPERA P52  
ESC 1:25



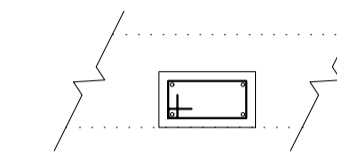
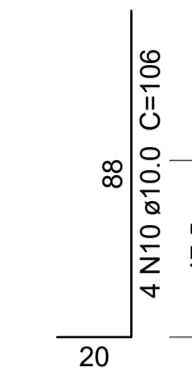
4 N4 ø5.0 c/15 C=74

ESPERA P47  
ESC 1:25



4 N6 ø5.0 c/15 C=92

ESPERA P42  
ESC 1:25



4 N4 ø5.0 c/12 C=74

Resumo do aço

AÇO	DIAM	C.TOTAL (m)	PESO + 10 % (kg)
CA50	6.3	3.6	1
	8.0	87.9	38.2
	10.0	27.6	18.7
	12.5	90.7	96
CA60	5.0	211.5	35.9
<b>PESO TOTAL</b>			
CA50	153.8		
CA60	35.9		

Vol. de concreto total (C-25) = 1.76 m³  
Área de forma total = 17.61 m²

PROJETO ESTRUTURAL

OBRAS: RESIDÊNCIA EM ALVENARIA

CLIENTE: SILAS AUGUSTO BULGARELLI DE FREITAS

ENDEREÇO: RUA ARACÉ, nº 24 FAZENDA SÃO JOSÉ - SANTANA DE PARNAÍBA - SP

RESPONSÁVEL TÉCNICO: GUSTAVO H. S. BELANSON CREA-PR 193709/D

CONTEÚDO: VIGAS PAV. SUPERIOR - 03

ESCALA: 1:50 DATA: 31/01/2022 PRANCHA: 01/01

UNIDADE: cm ARQUIVO: DWG REVISÃO: 00

GB ENGENHARIA

Rua Onilva 253 - Jardim Aeroporto  
Arapongas - PR - Fone: (41) 39693-1699  
www.gbengenharia.com.br