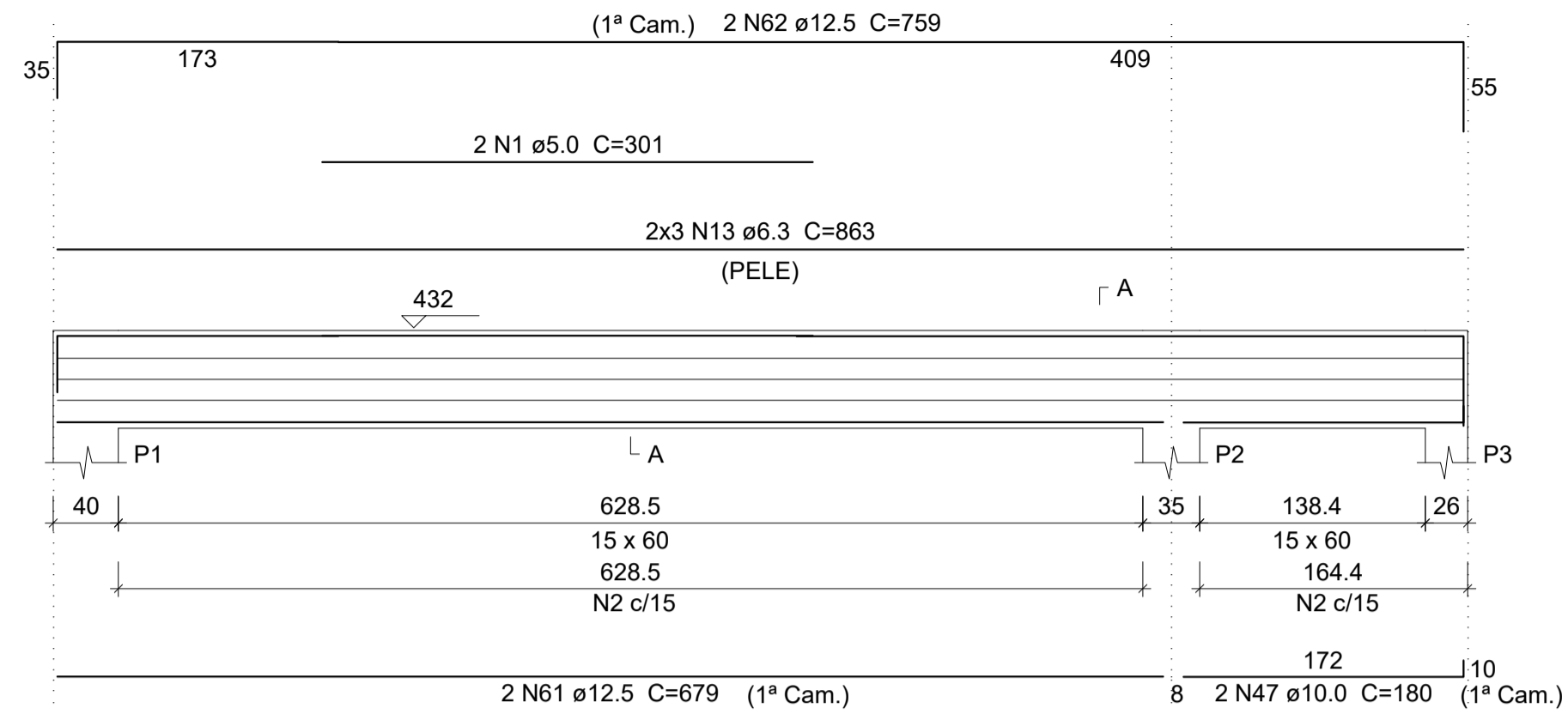
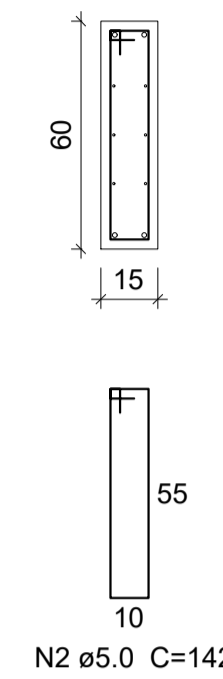


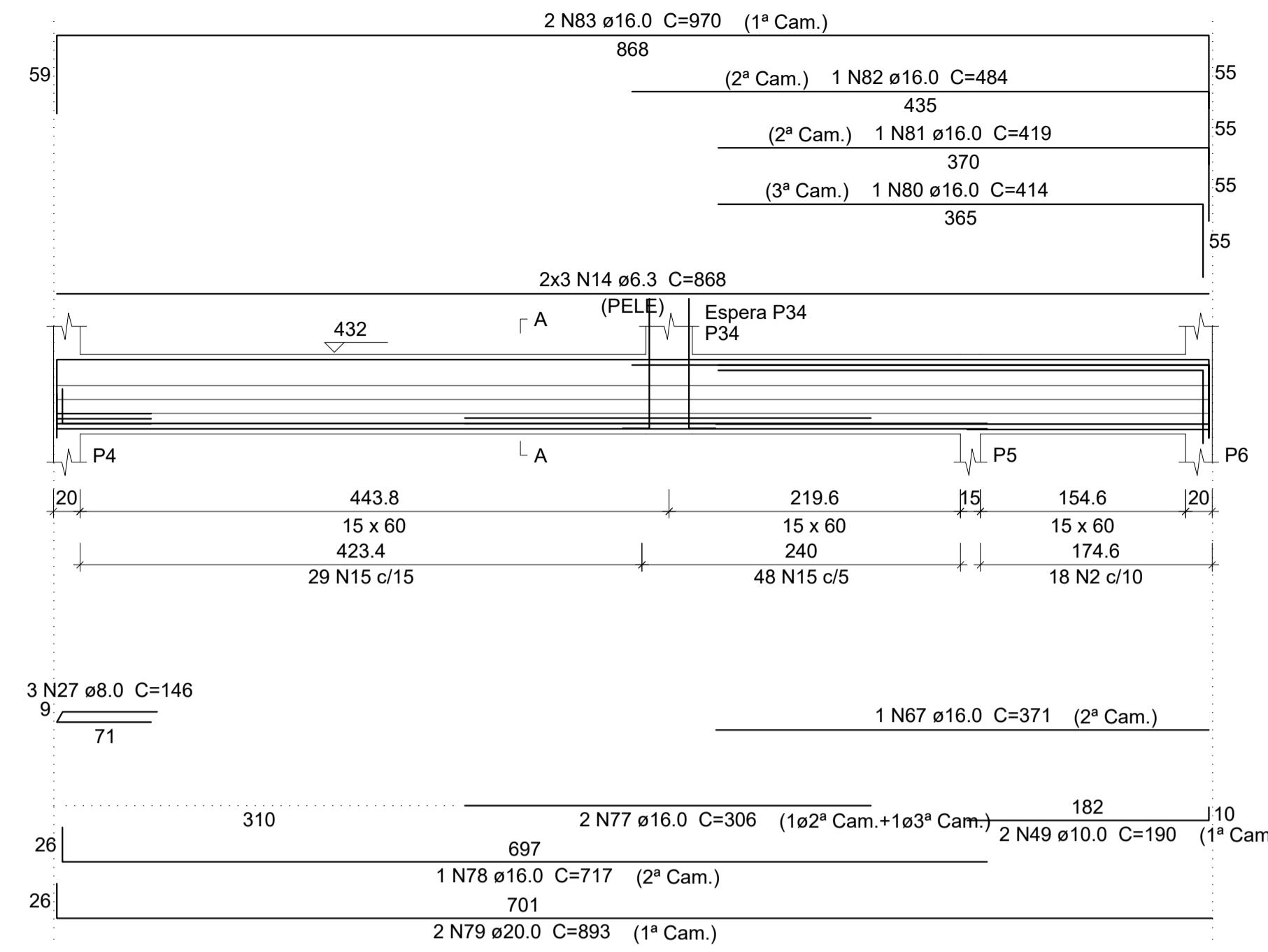
VT1
ESC 1:50



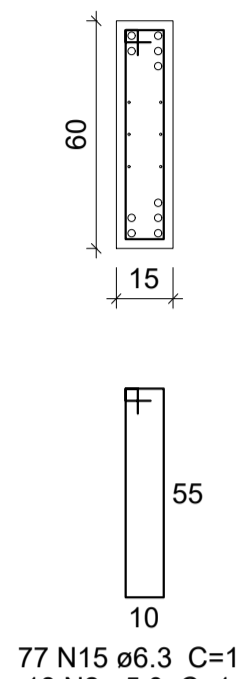
SEÇÃO A-A
ESC 1:25



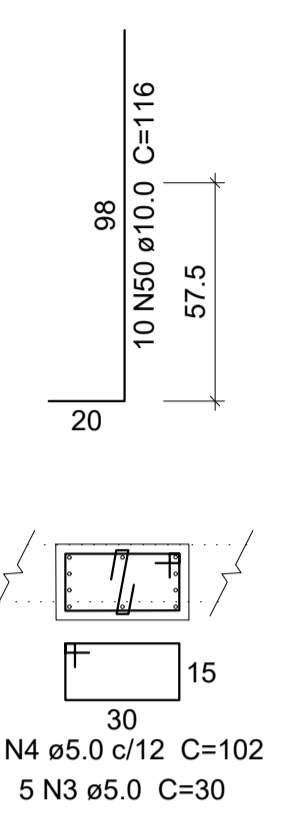
VT2
ESC 1:50



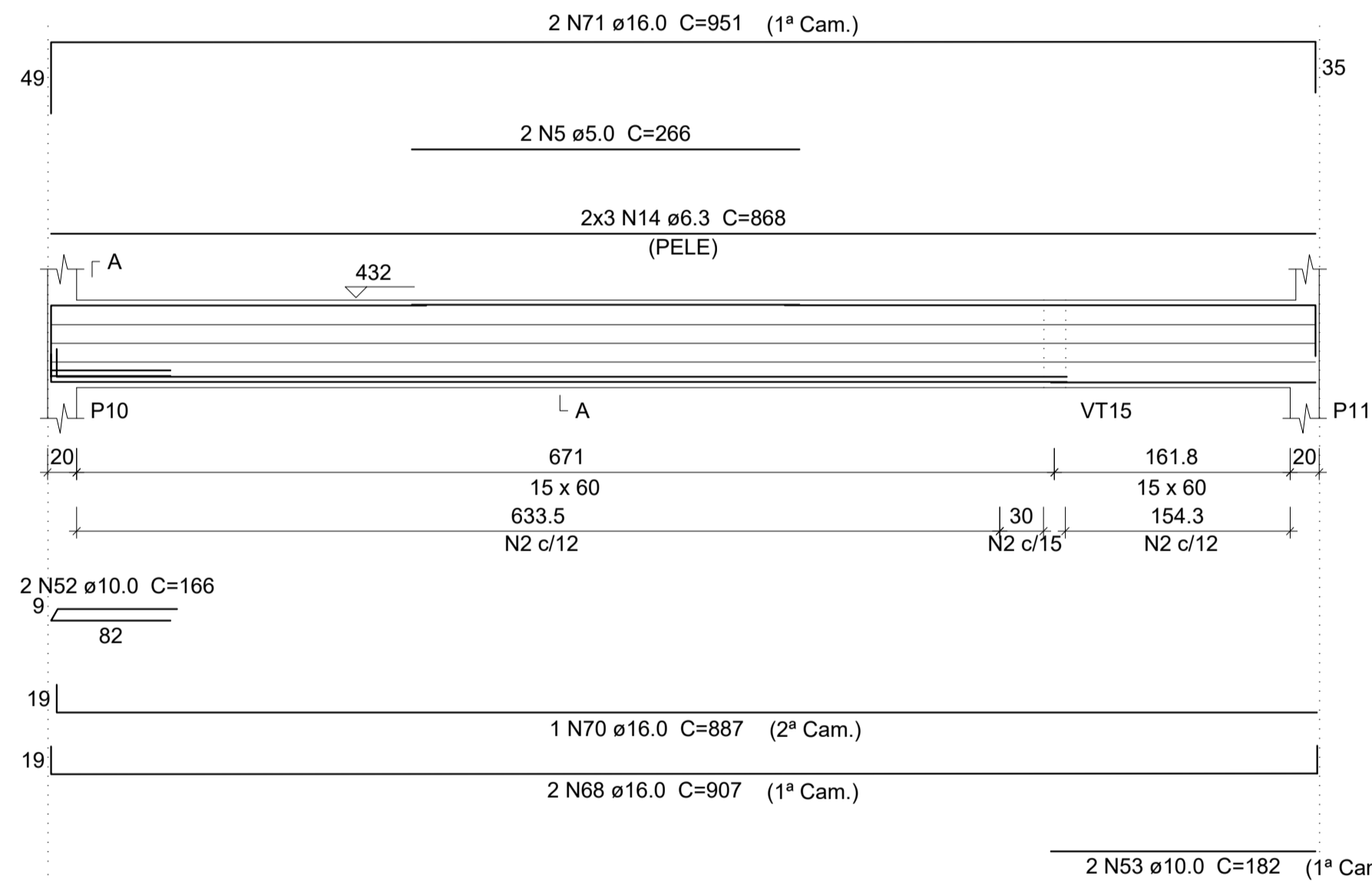
SEÇÃO A-A
ESC 1:25



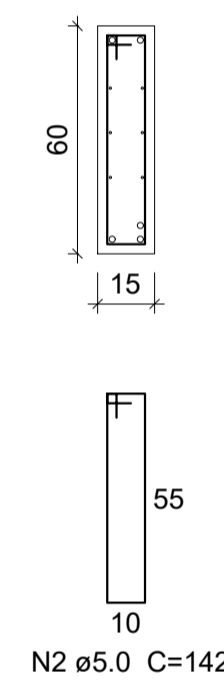
ESPERA P34
ESC 1:25



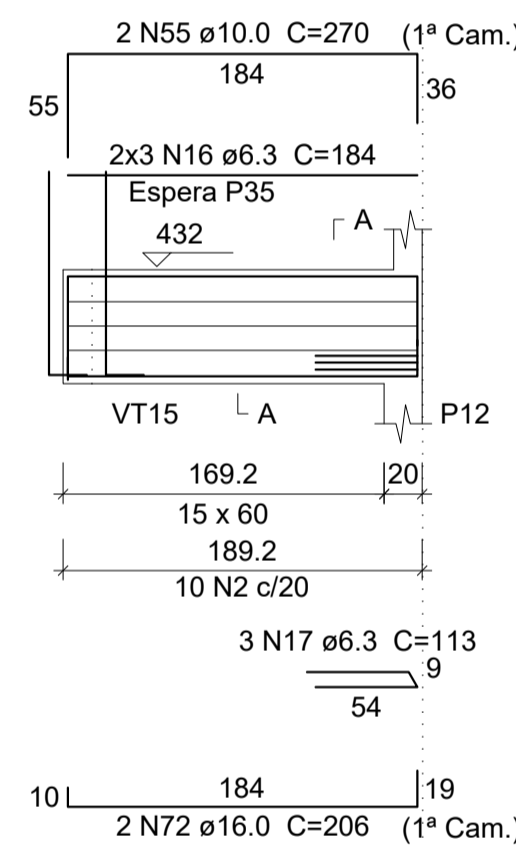
VT4
ESC 1:50



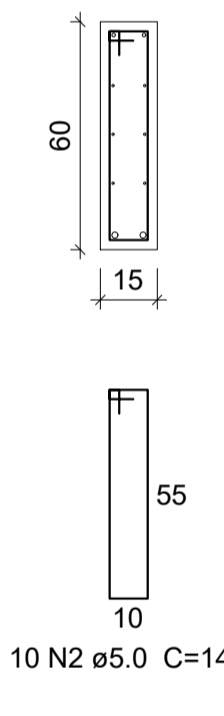
SEÇÃO A-A
ESC 1:25



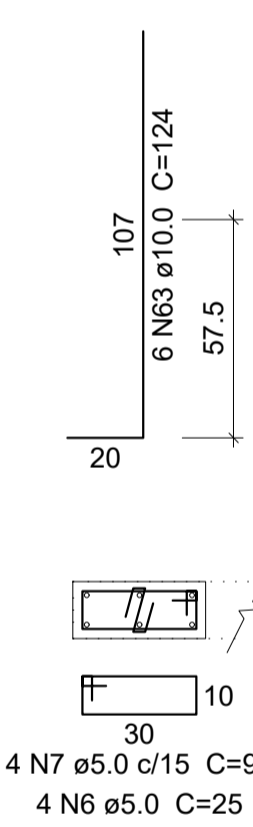
VT5
ESC 1:50



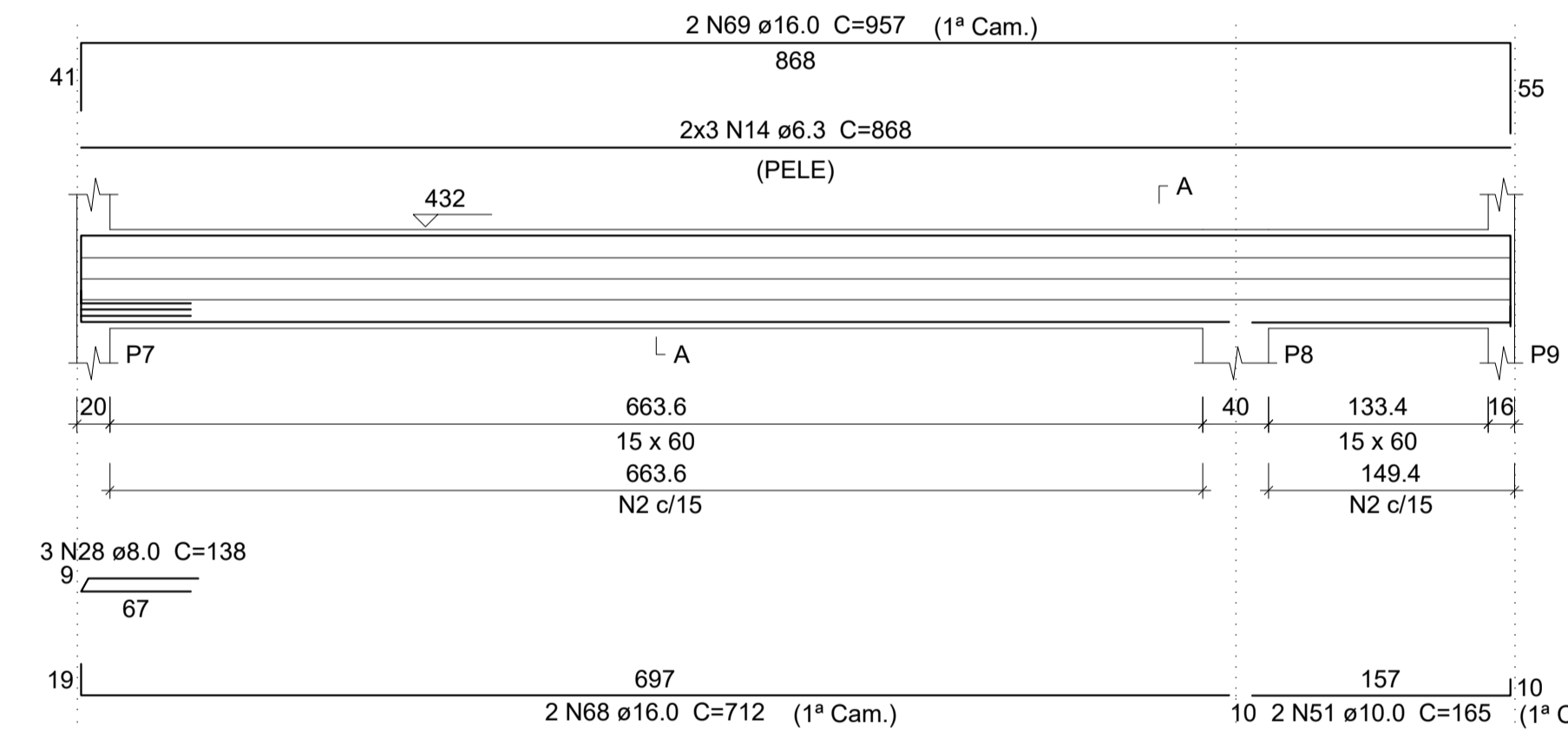
SEÇÃO A-A
ESC 1:25



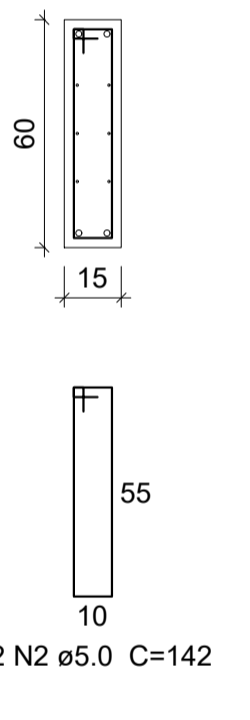
ESPERA P35
ESC 1:25



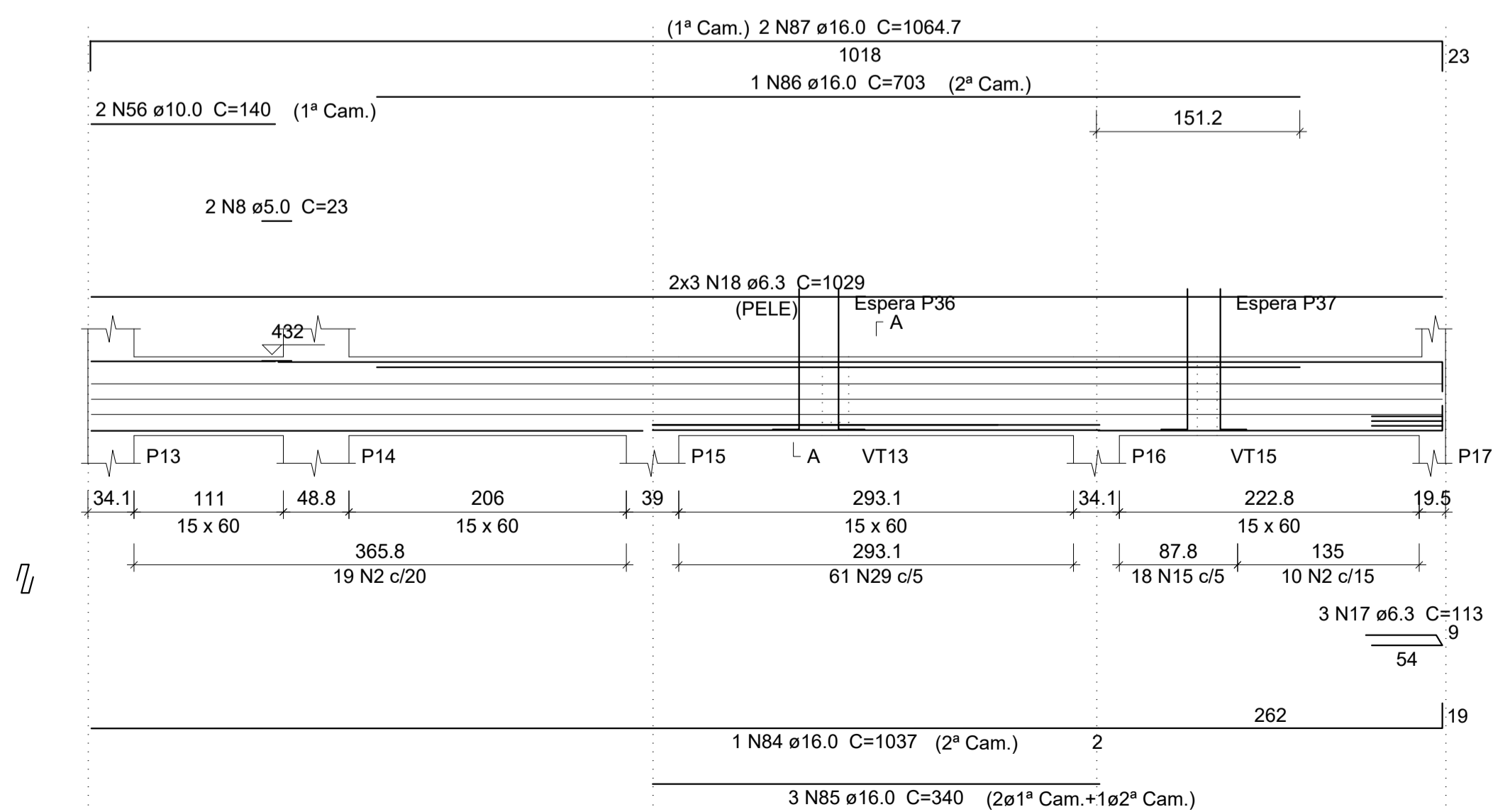
VT3
ESC 1:50



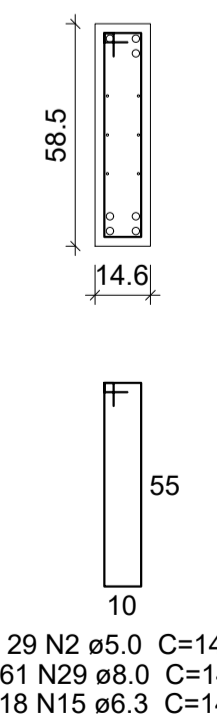
SEÇÃO A-A
ESC 1:25



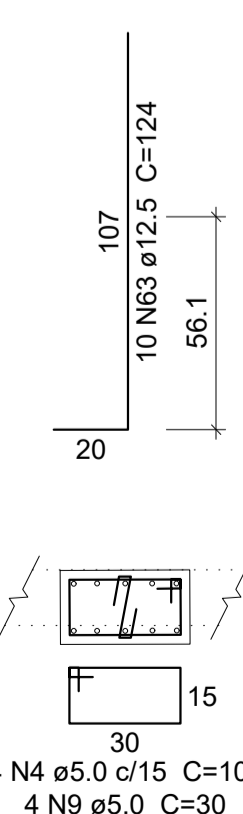
VT6
ESC 1:50



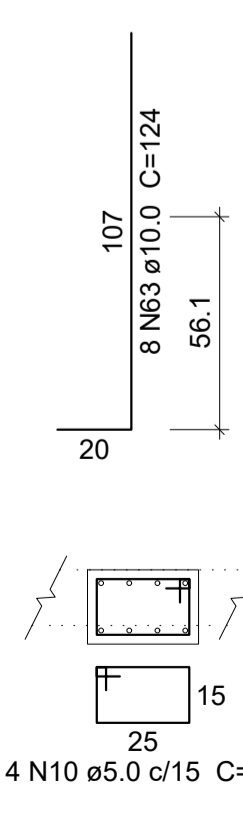
SEÇÃO A-A
ESC 1:25



ESPERA P36
ESC 1:25



ESPERA P37
ESC 1:25



PROJETO ESTRUTURAL

OBRA: RESIDÊNCIA EM ALVENARIA

CLIENTE: SILAS AUGUSTO BULGARELLI DE FREITAS

ENDEREÇO: RUA ARACÉ, nº 24 FAZENDA SÃO JOSÉ - SANTANA DE PARNAÍBA - SP

RESPONSÁVEL TÉCNICO: GUSTAVO H. S. BELANSON CREA-PR 193709/D

CONTEUDO: VIGAS PAV. TERREO - 01

ESCALA: 1:50 DATA: 31/01/2022 PRANCHA: 01/01

UNIDADE: cm ARQUIVO: DWG REVISÃO: 00

GB ENGENHARIA

Rua Ona 253 - Jardim Aeroporto
Aracá - PR - Fone: (41) 39603-1699
www.belanson.com.br