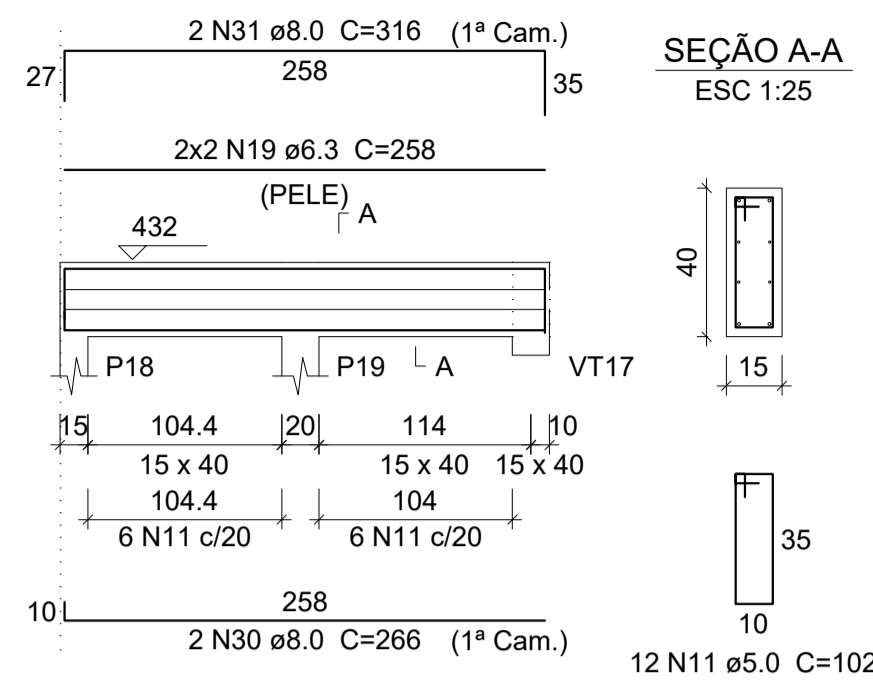
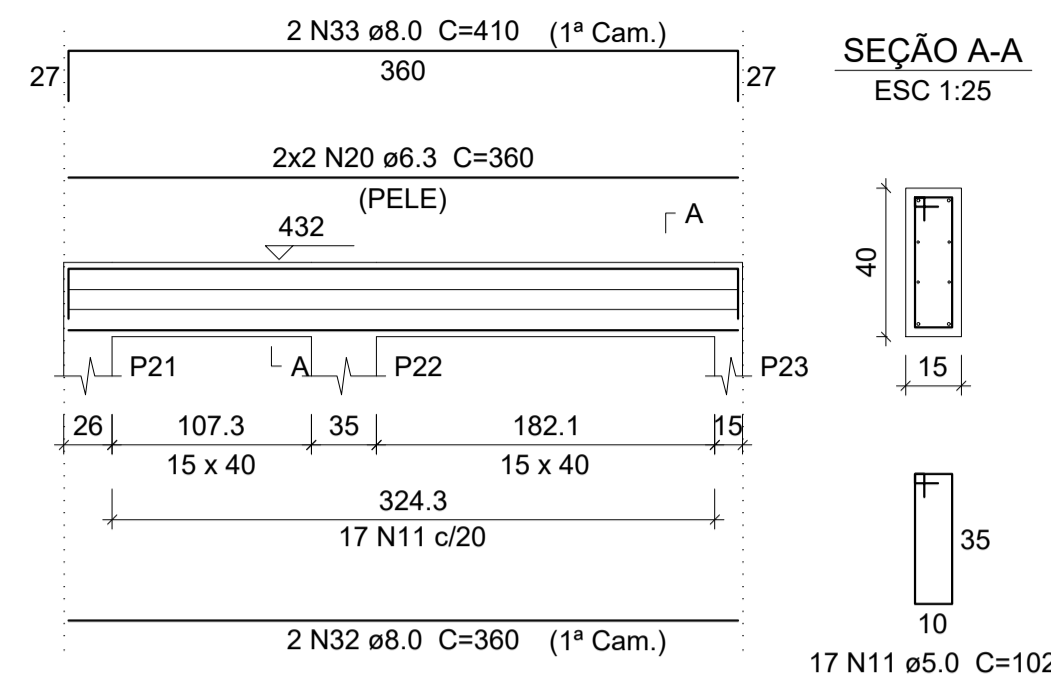


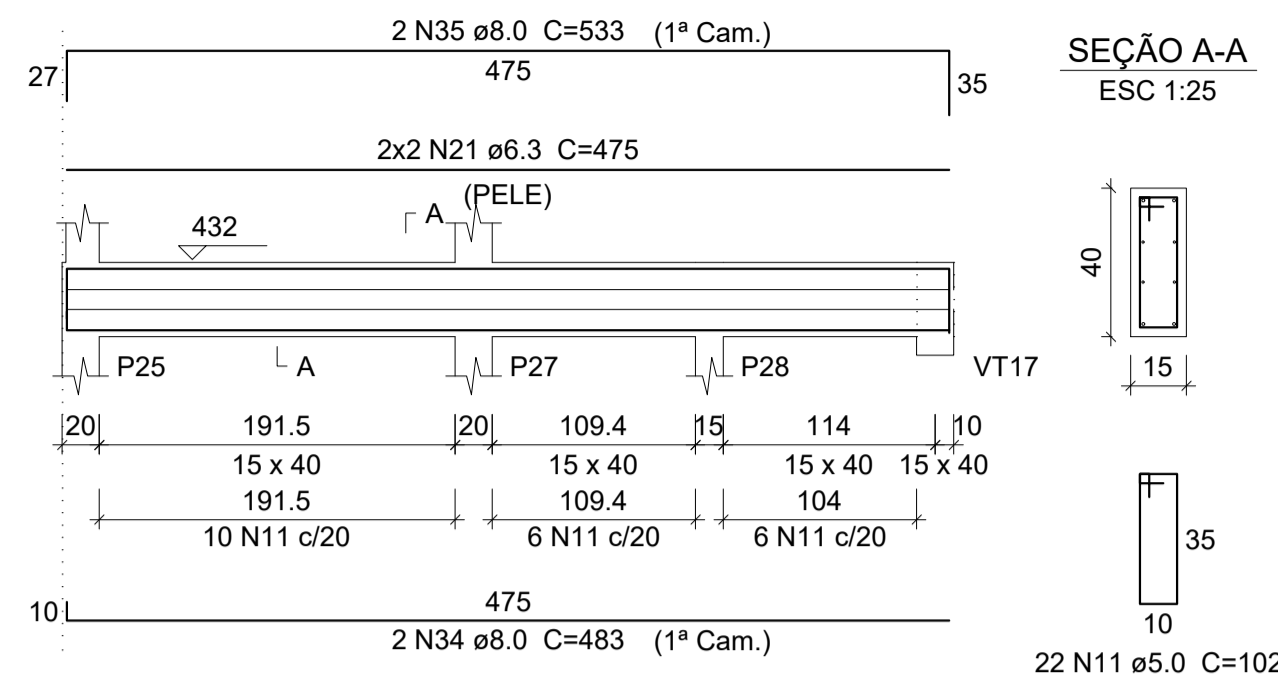
VT7
ESC 1:50



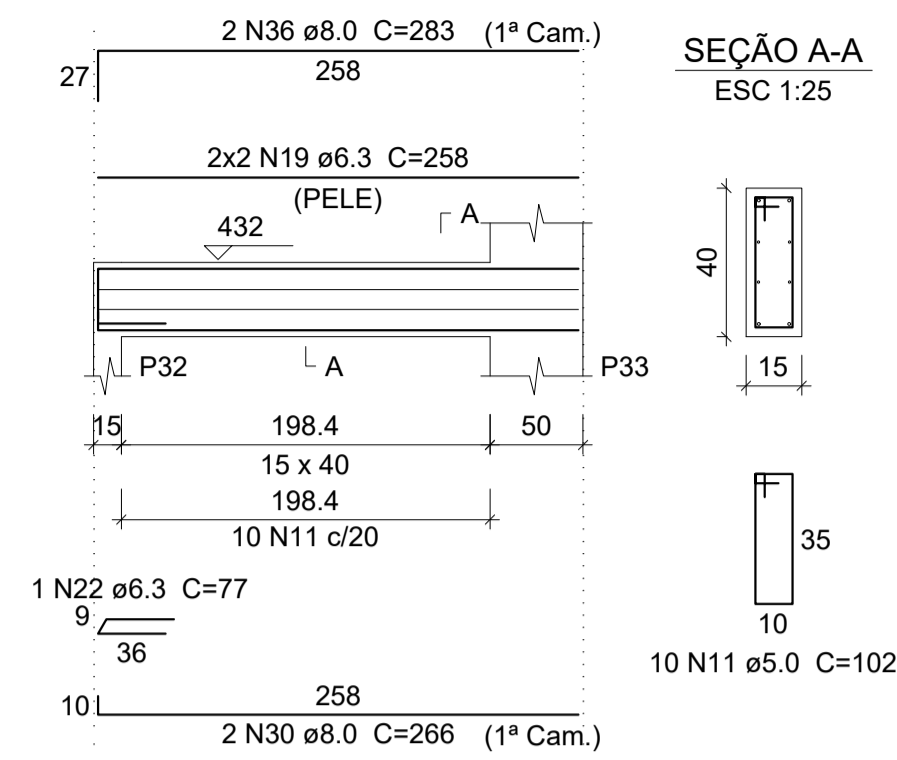
VT8
ESC 1:50



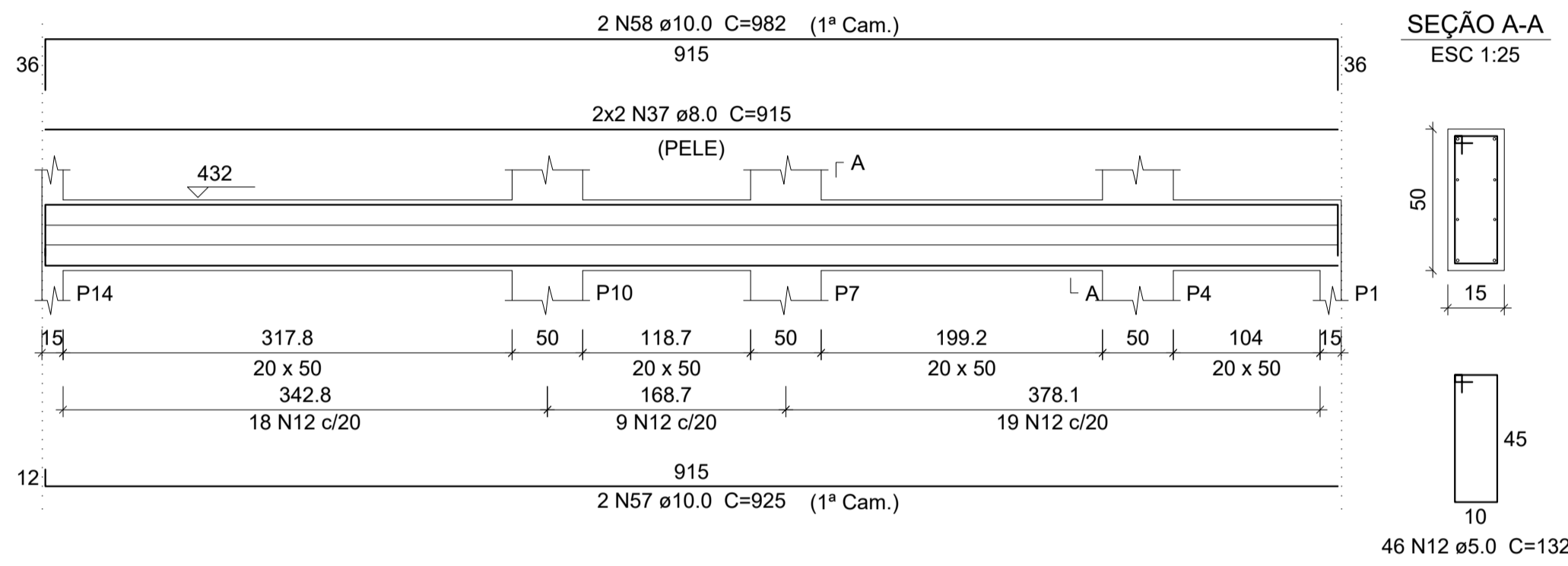
VT9
ESC 1:50



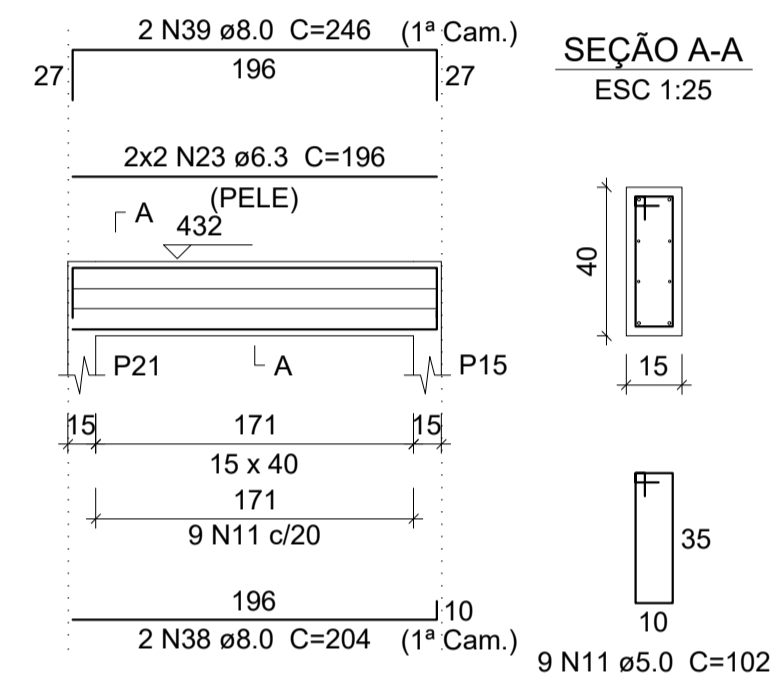
VT10
ESC 1:50



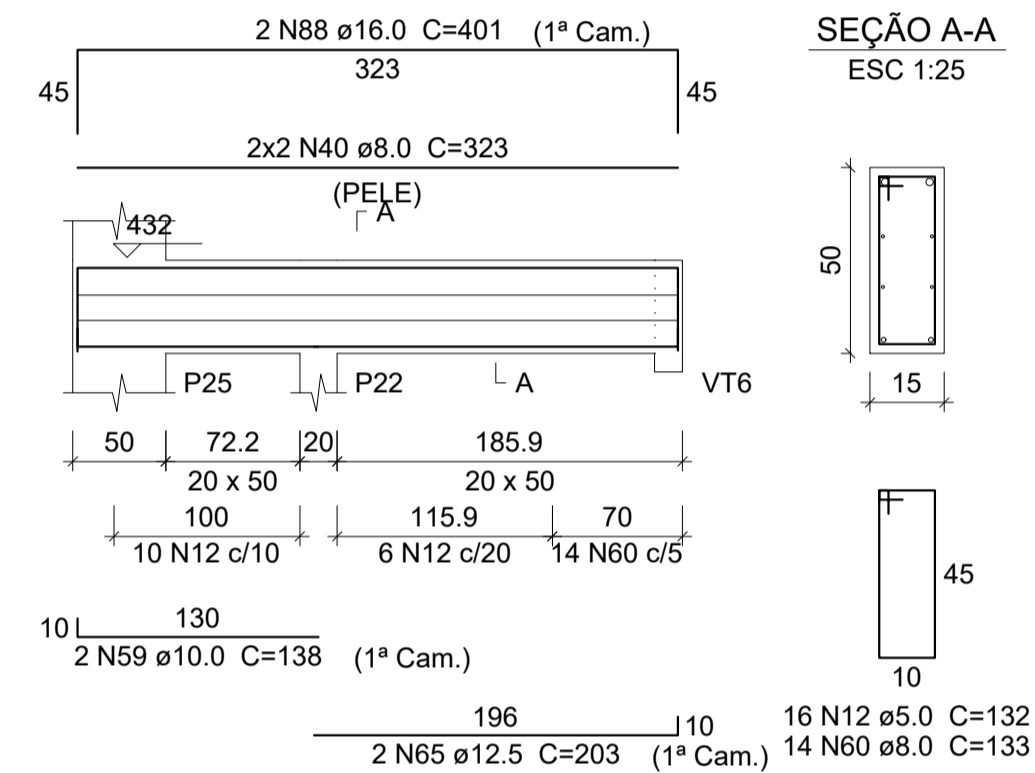
VT11
ESC 1:50



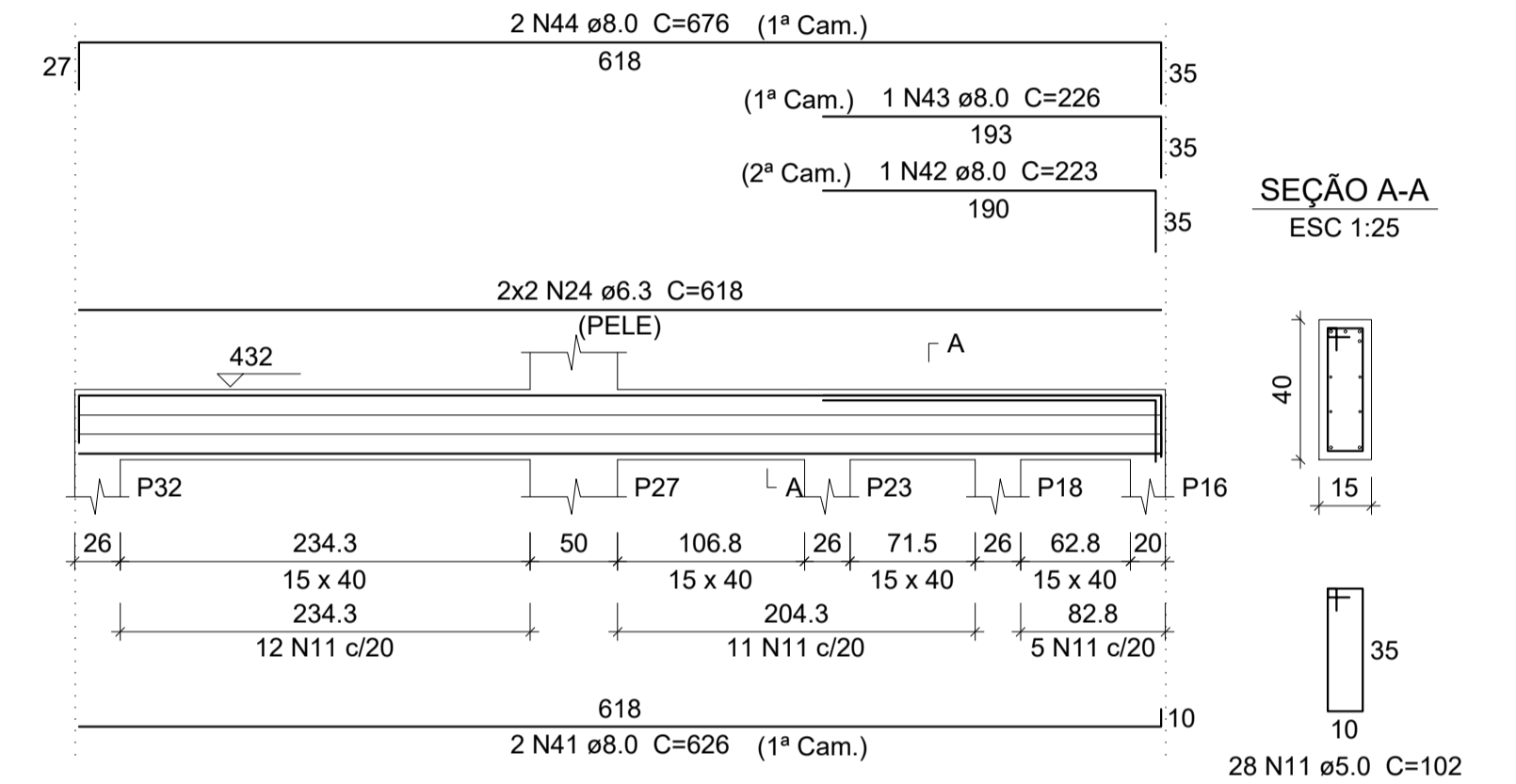
VT12
ESC 1:50



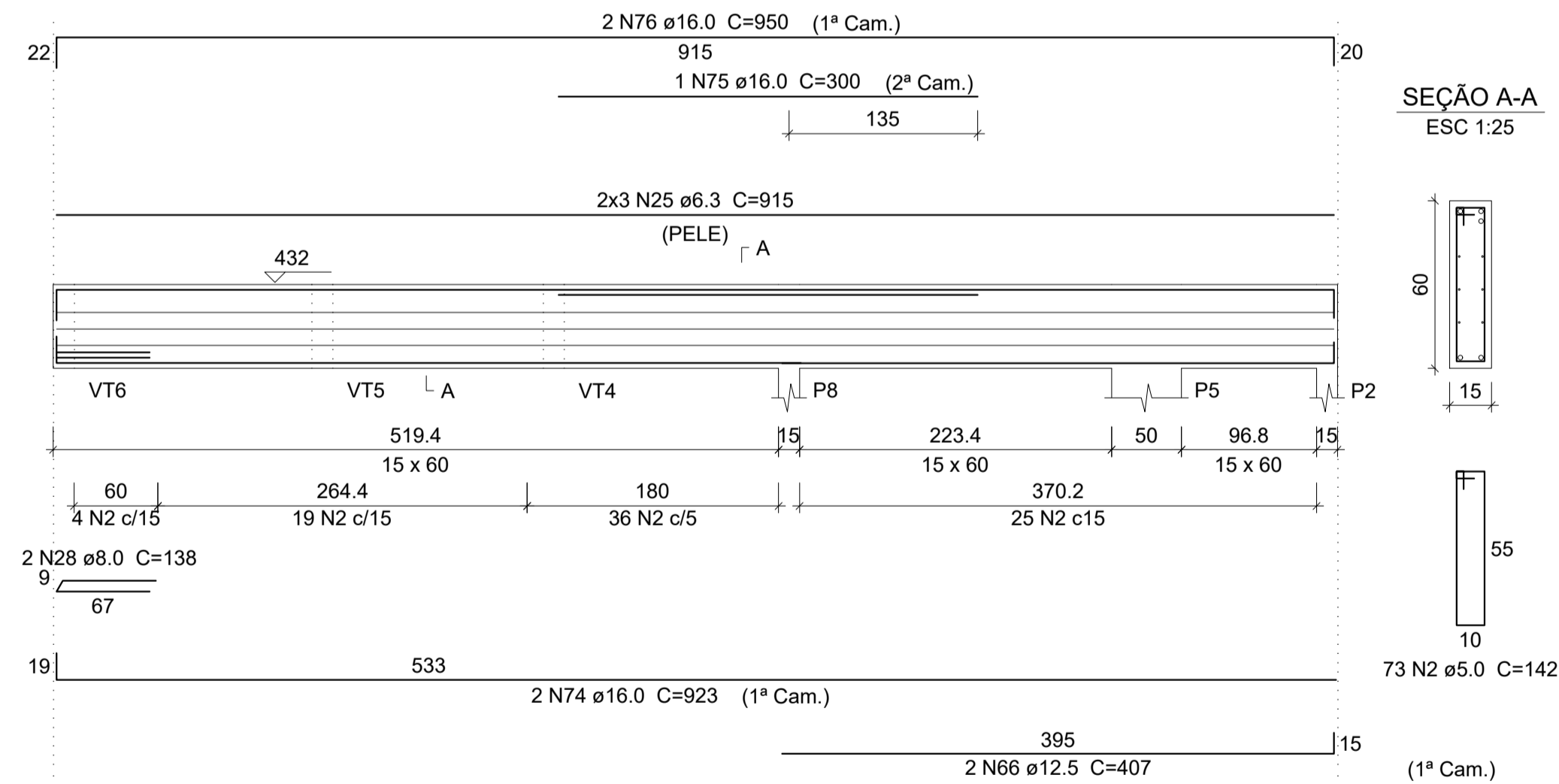
VT13
ESC 1:50



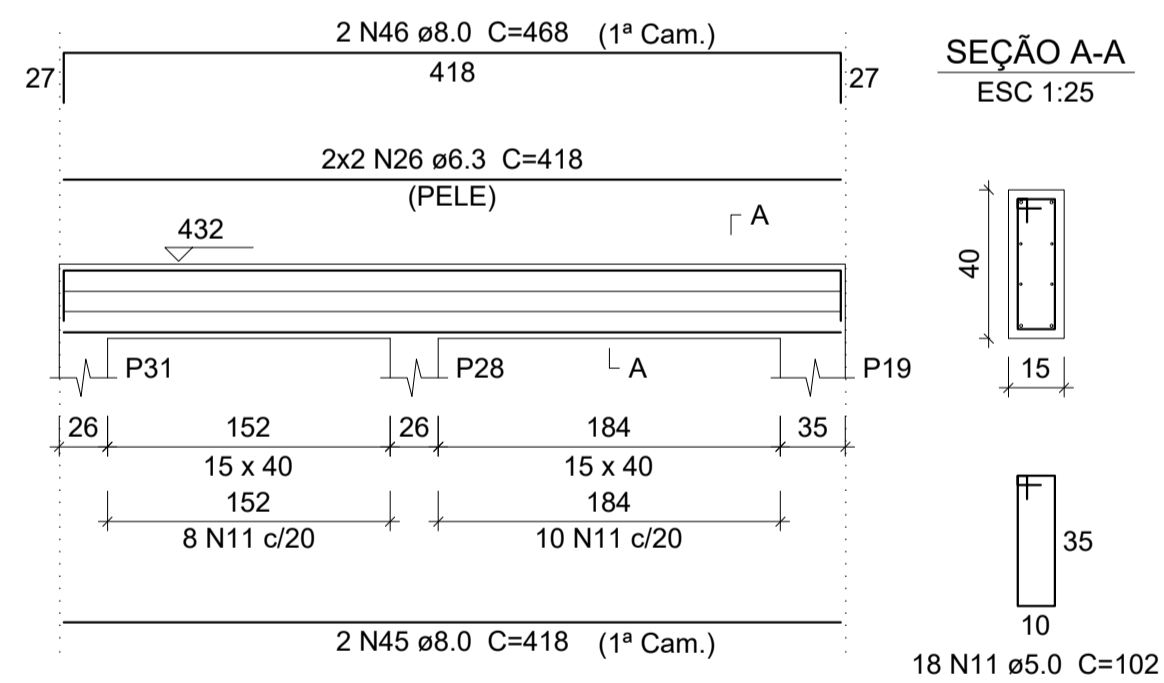
VT14
ESC 1:50



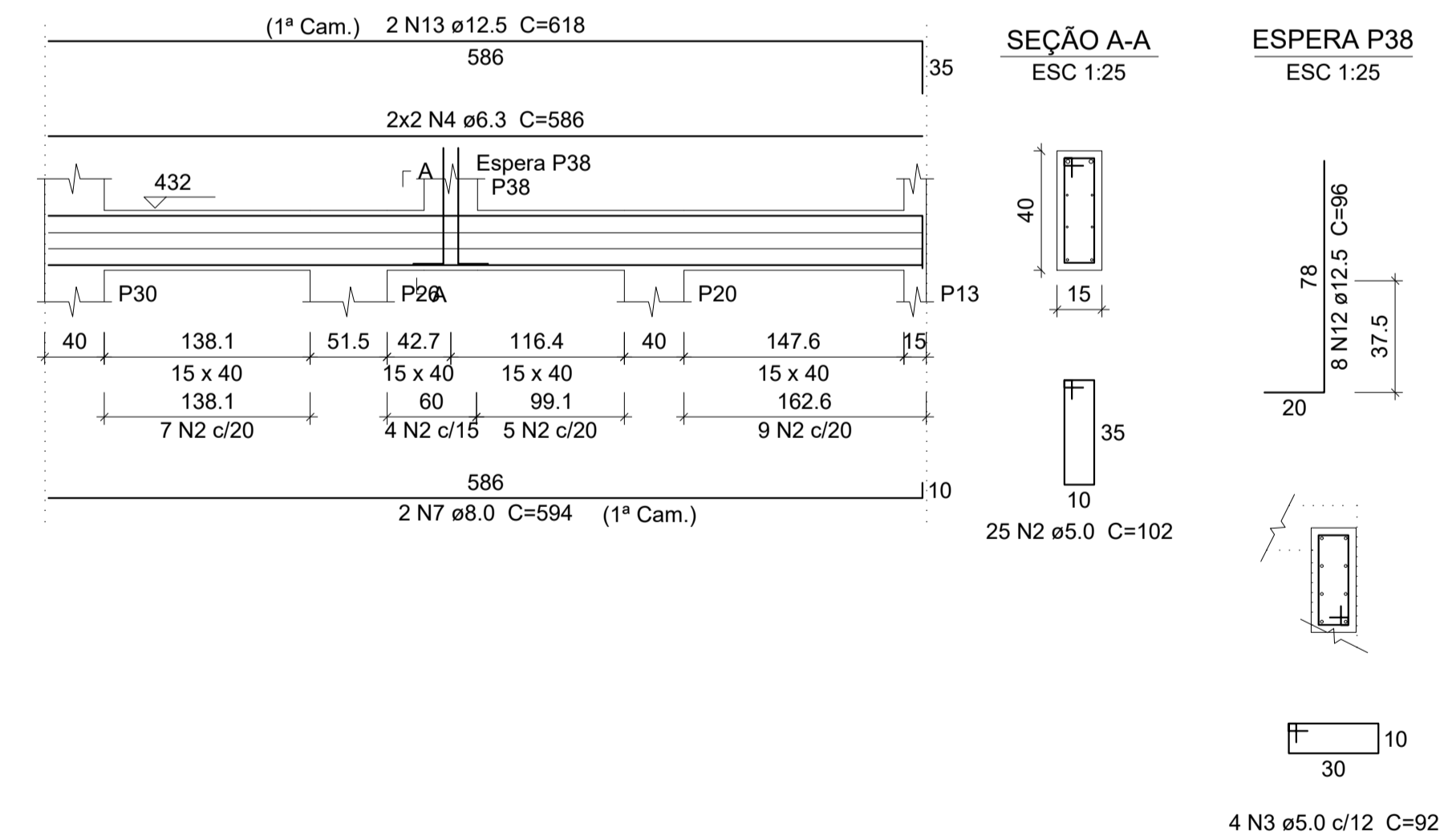
VT15
ESC 1:50



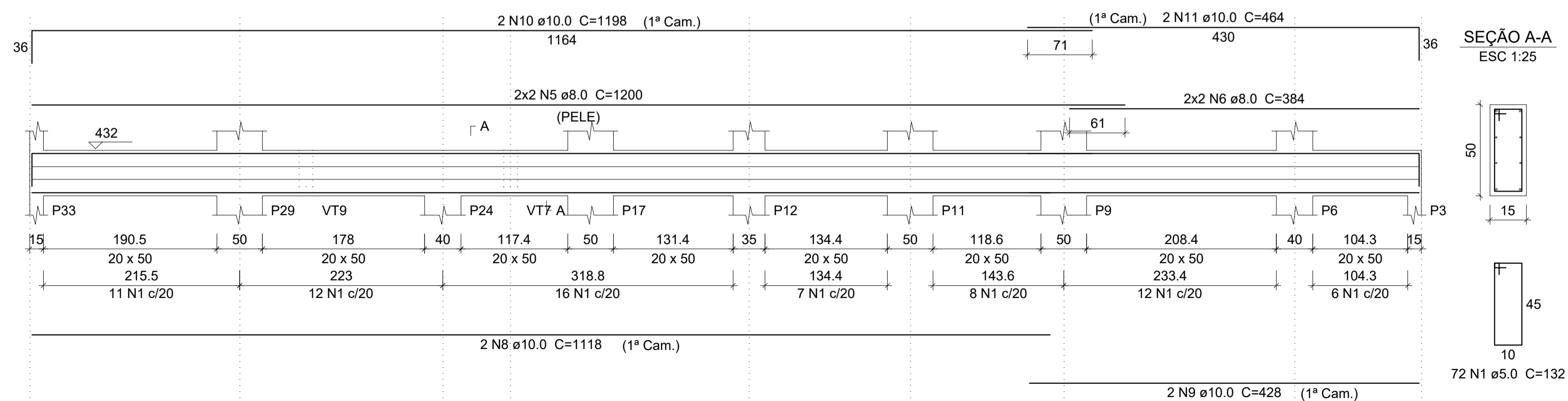
VT16
ESC 1:50



VT18
ESC 1:50



VT17
ESC 1:50



PROJETO ESTRUTURAL		
OBRA:	RESIDÊNCIA EM ALVENARIA	
CLIENTE:	SILAS AUGUSTO BULGARELLI DE FREITAS	
ENDEREÇO:	RUA ARACÊ, nº 24 FAZENDA SÃO JOSÉ - SANTANA DE PARNAÍBA - SP	
RESPONSÁVEL TÉCNICO:	GUSTAVO H. S. BELANSON CREA-PR 193709/D	
CONTEÚDO:	VIGAS PAV. TERREO - 02	
ESCALA:	DATA:	PRANCHA:
1:50	31/01/2022	01/01
UNIDADE:	ARQUIVO:	REVISÃO:
cm	DWG	00

GB ENGENHARIA

Rua Onça 253 - Jardim Aeroporto
Arapongas - PR - Fone: (41) 35603-1699
www.gbengenharia.com.br