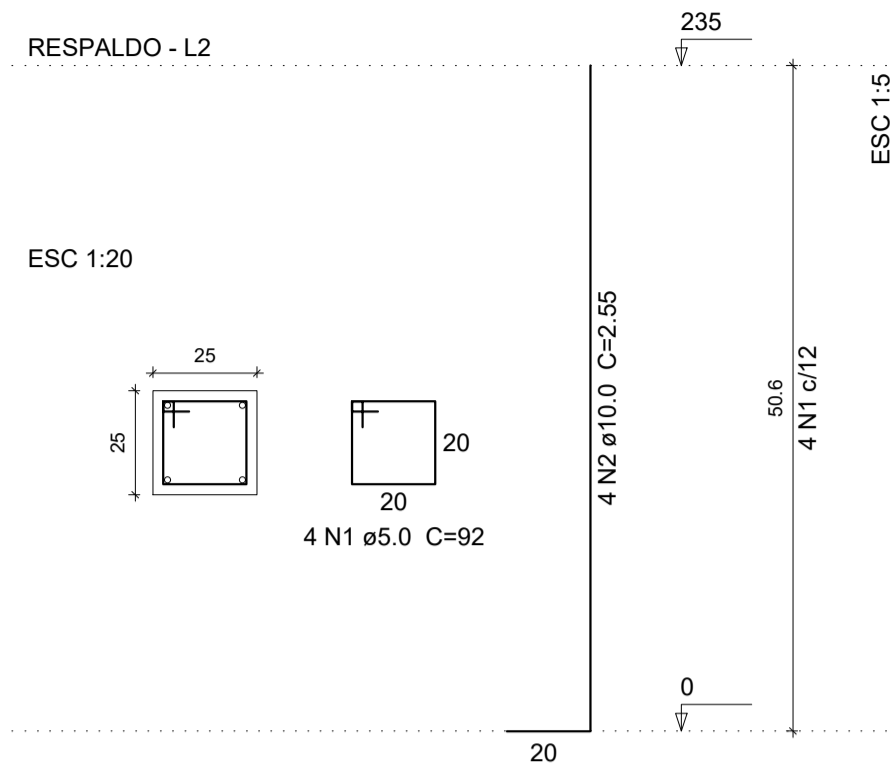
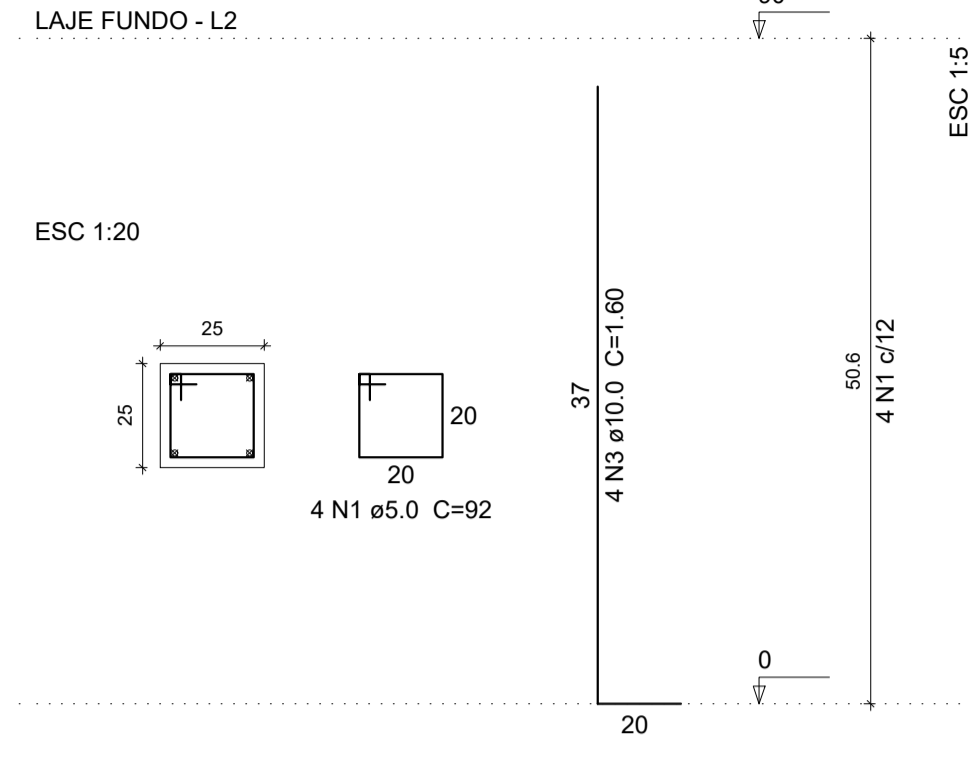


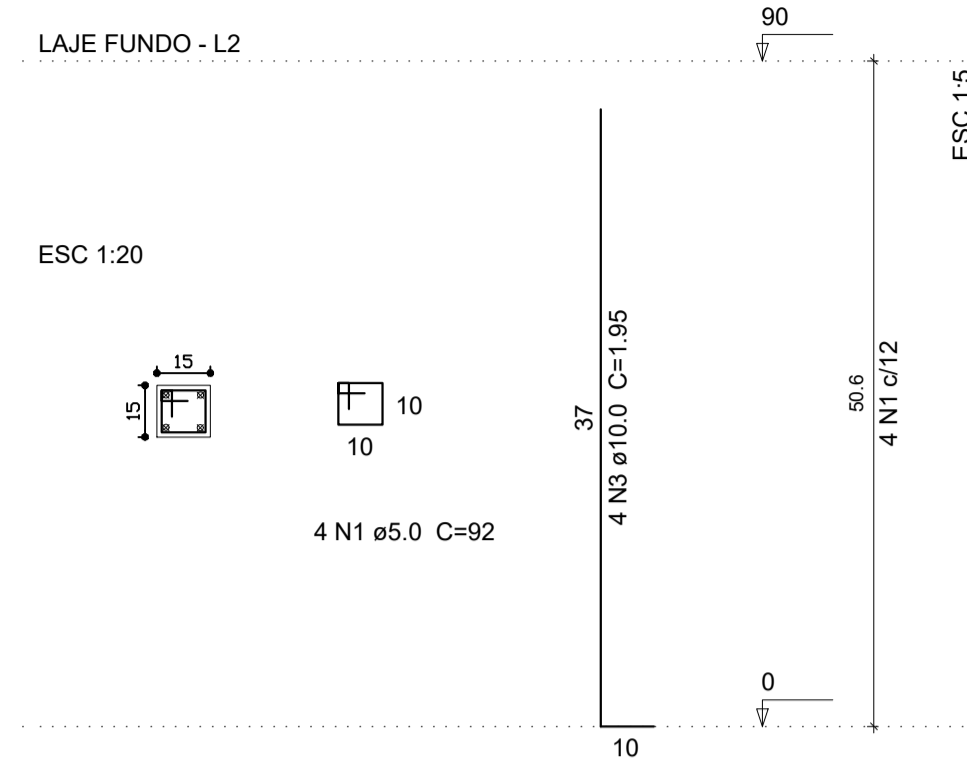
P1=P2=P3=P4=P5=P6=P7=P8=P9=P10=P11=P12=P13=P14



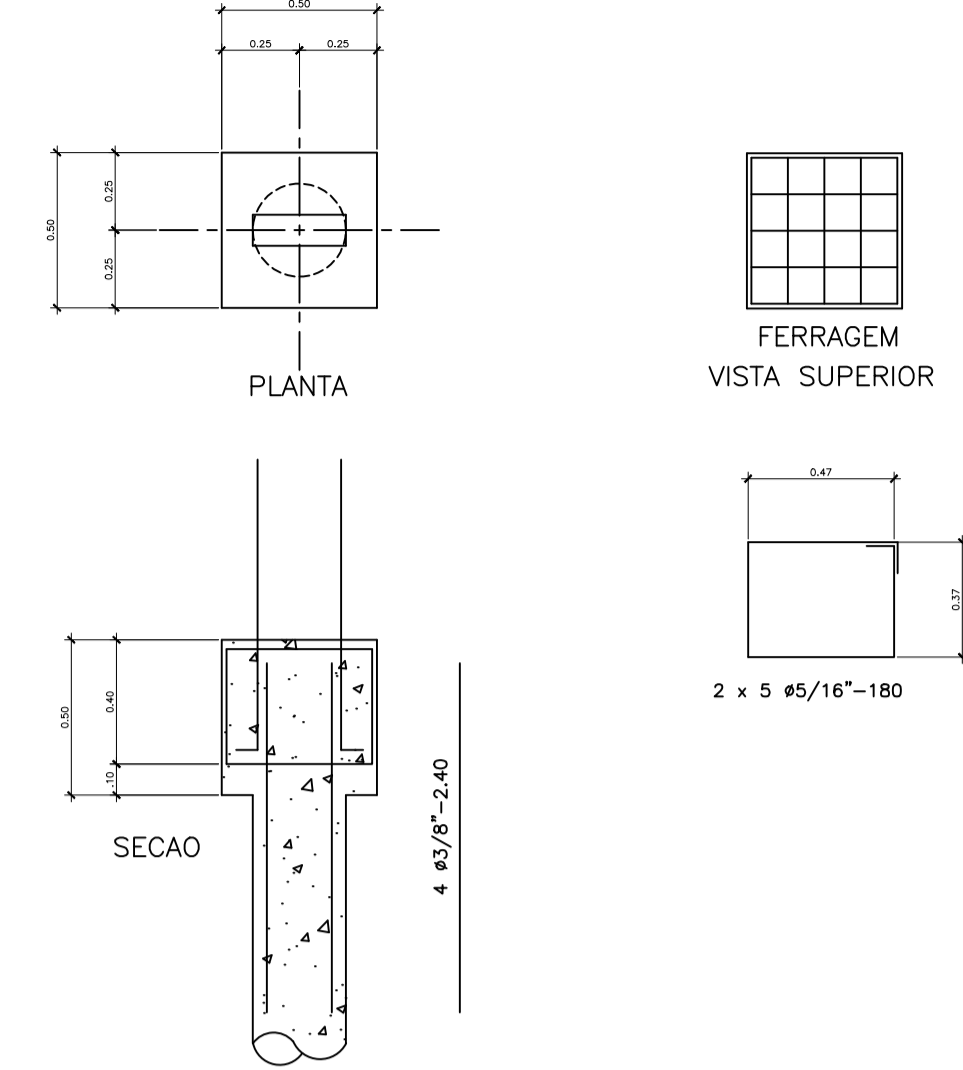
P15=P16=P17



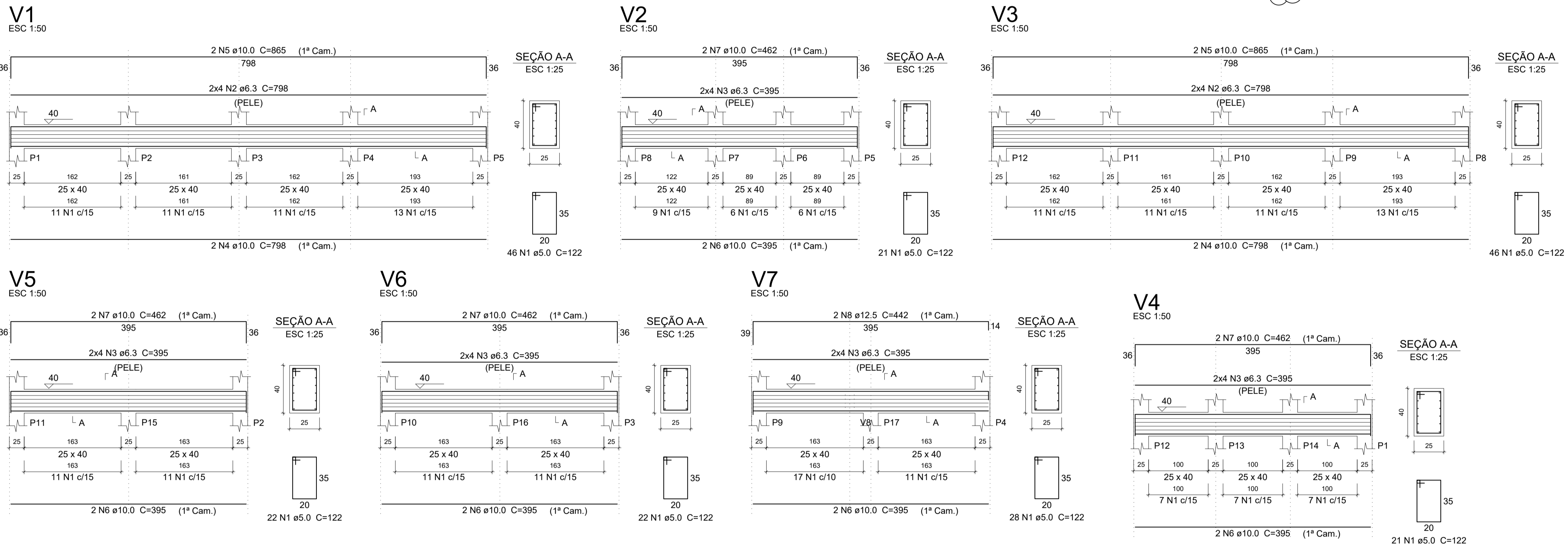
P18=P19=P20



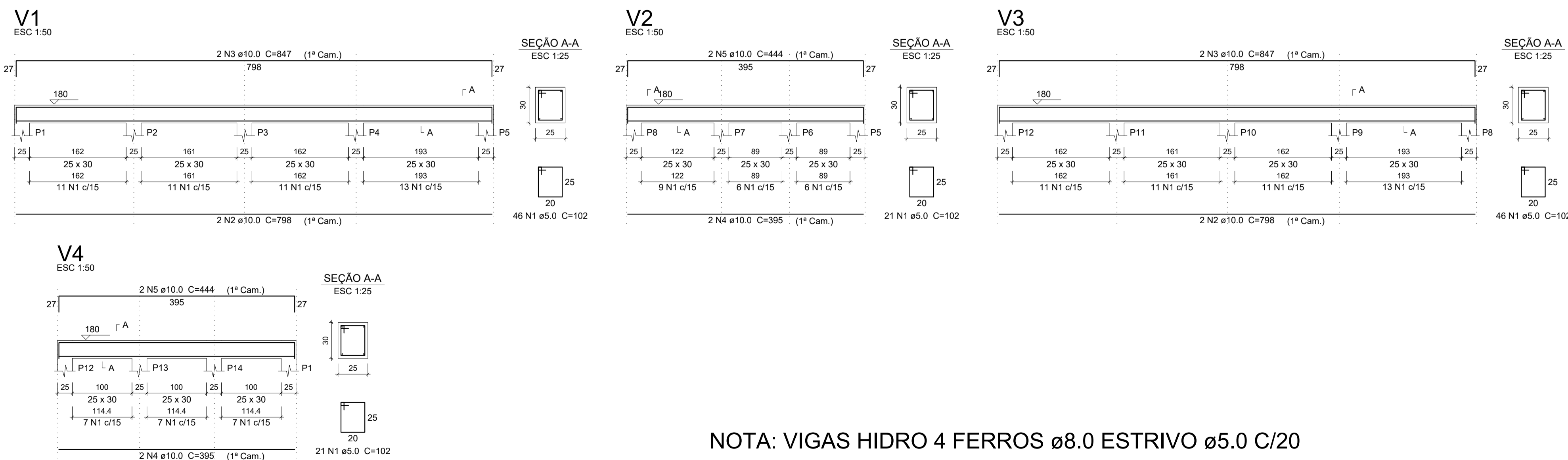
B1=B2=B3=B4=B5=B6=B7=B8=B9=B10=B11=B12=B13=B14=B15=B16=B17



### VIGAS LAJE DO FUNDO



### VIGAS RESPALDO PISCINA



NOTA: VIGAS HIDRO 4 FERROS ø8.0 ESTRIVO ø5.0 C/20

### PROJETO ESTRUTURAL

OBRA: RESIDÊNCIA EM ALVENARIA

CLIENTE: SILAS AUGUSTO BULGARELLI DE FREITAS

ENDEREÇO: RUA ARACÊ, nº 24 FAZENDA SÃO JOSÉ - SANTANA DE PARNAÍBA - SP

RESPONSÁVEL TÉCNICO:

GUSTAVO H. S. BELANSON CREA-PR 193709/D

CONTEÚDO: PILARES E VIGAS PISCINA

ESCALA: 1:50	DATA: 31/01/2022	PRANCHA: 01/01
UNIDADE: cm	ARQUIVO: DWG	REVISÃO: 00

GB ENGENHARIA

Rua Onofre 253 - Jardim Aeroporto  
Arapongas - PR - Fone: (41) 35603-1699  
www.gbengenharia.com.br